

ASTON SERIES
ON DISPLAY AT LEPPINGTON



live your life in style

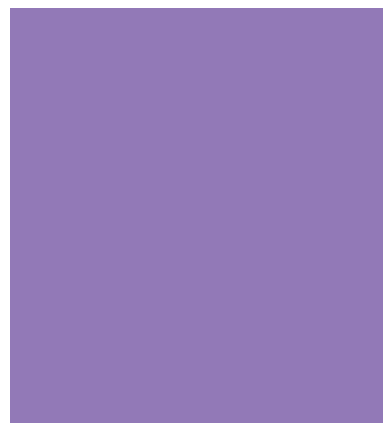
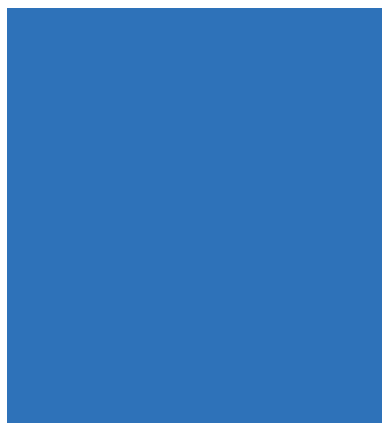
ESPLANADE FACADE



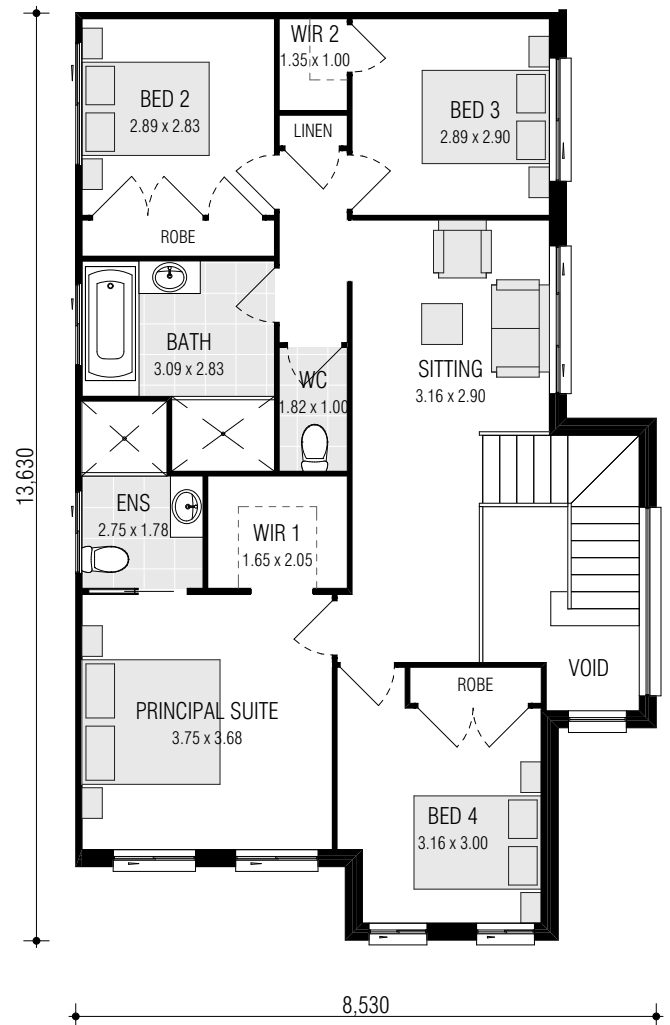
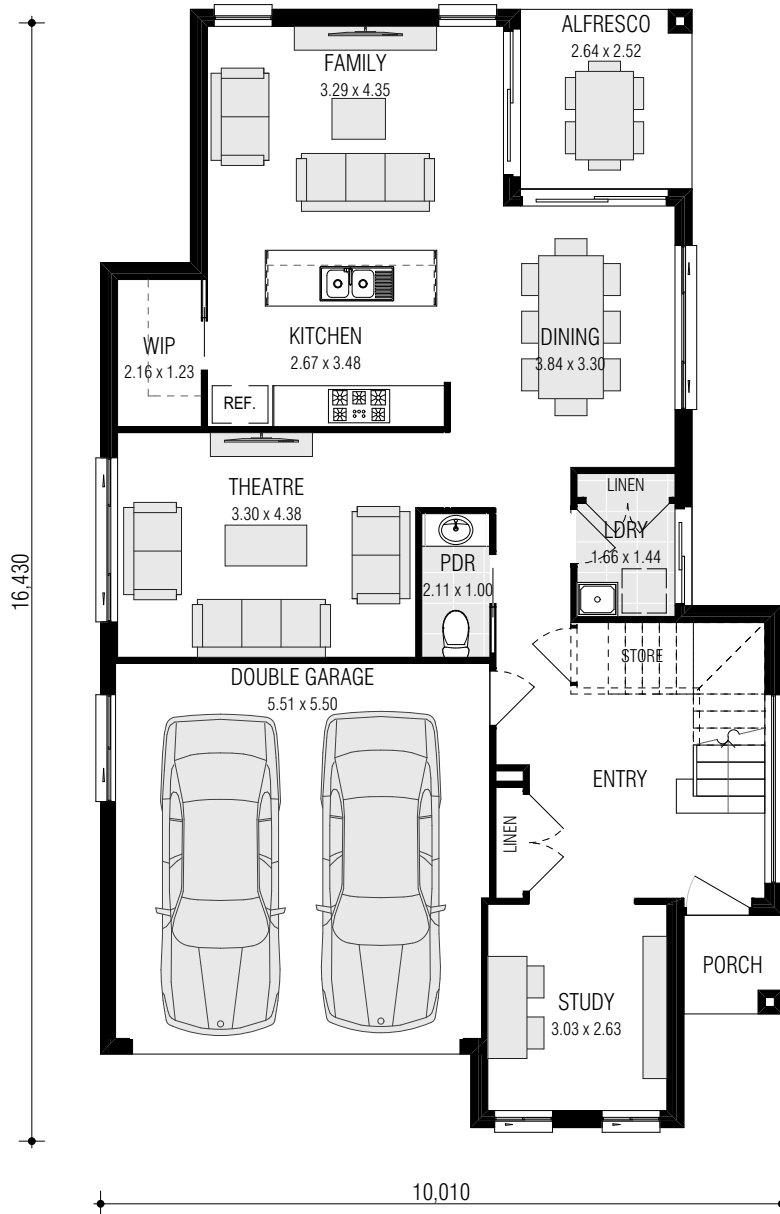
style



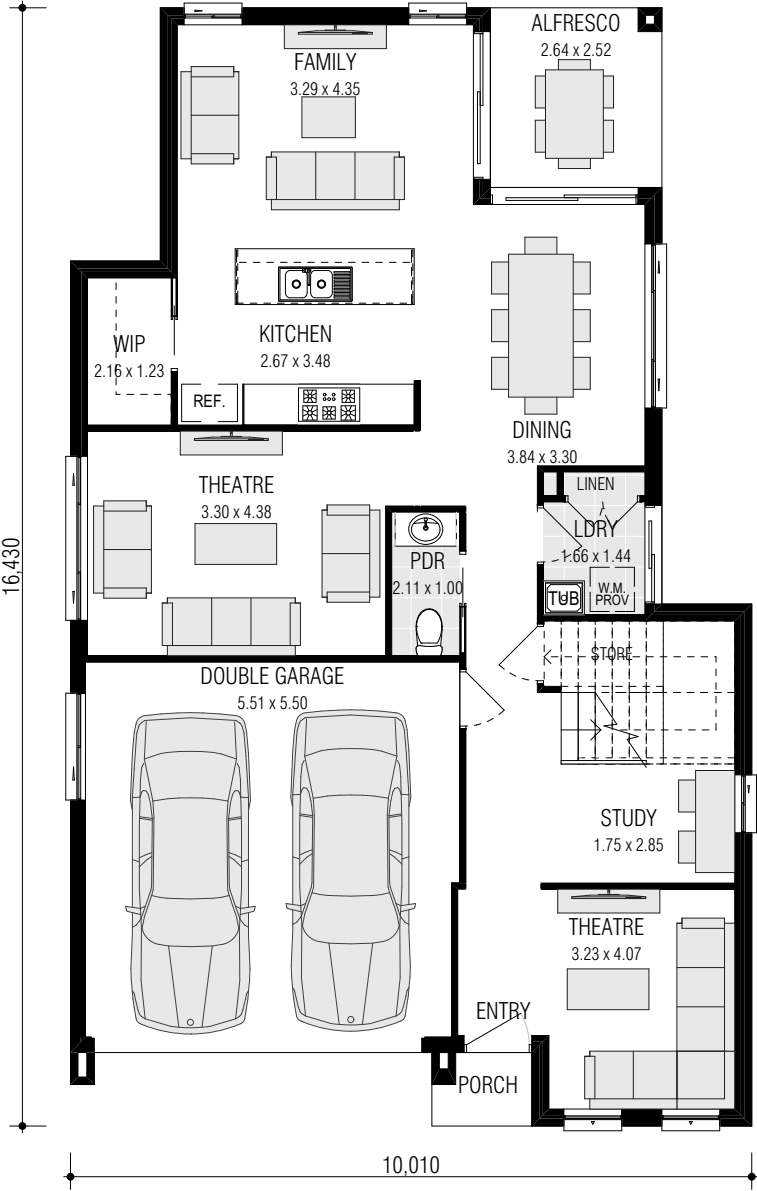
THE **ASTON** SERIES COMBINES
TRADITIONAL STYLE WITH
PRACTICAL OPEN-PLAN
LIVING. FEATURING
4 BEDROOMS, OPEN-PLAN
KITCHEN, FAMILY/DINING AREA
& HOME THEATRE.



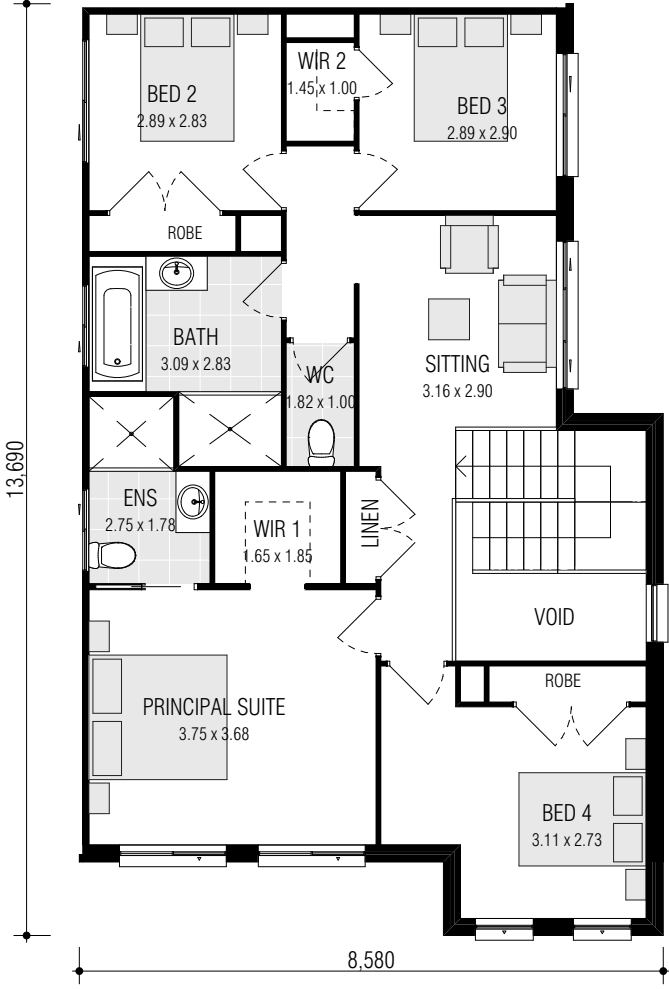
**FITS
25M LONG
BLOCKS***



FITS
25M LONG
BLOCKS*

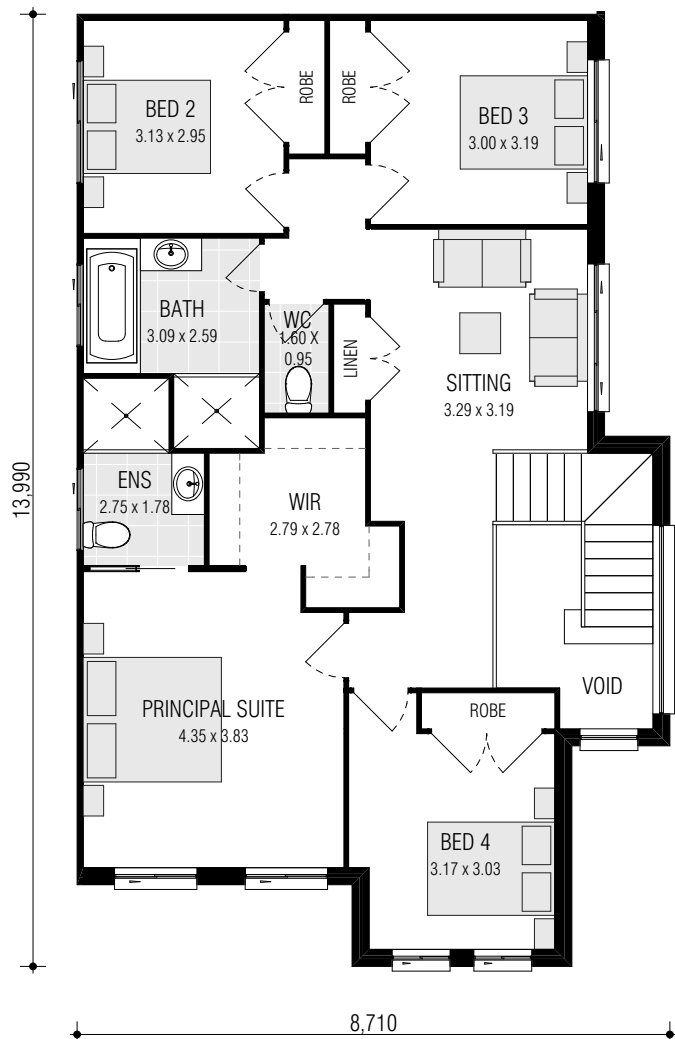
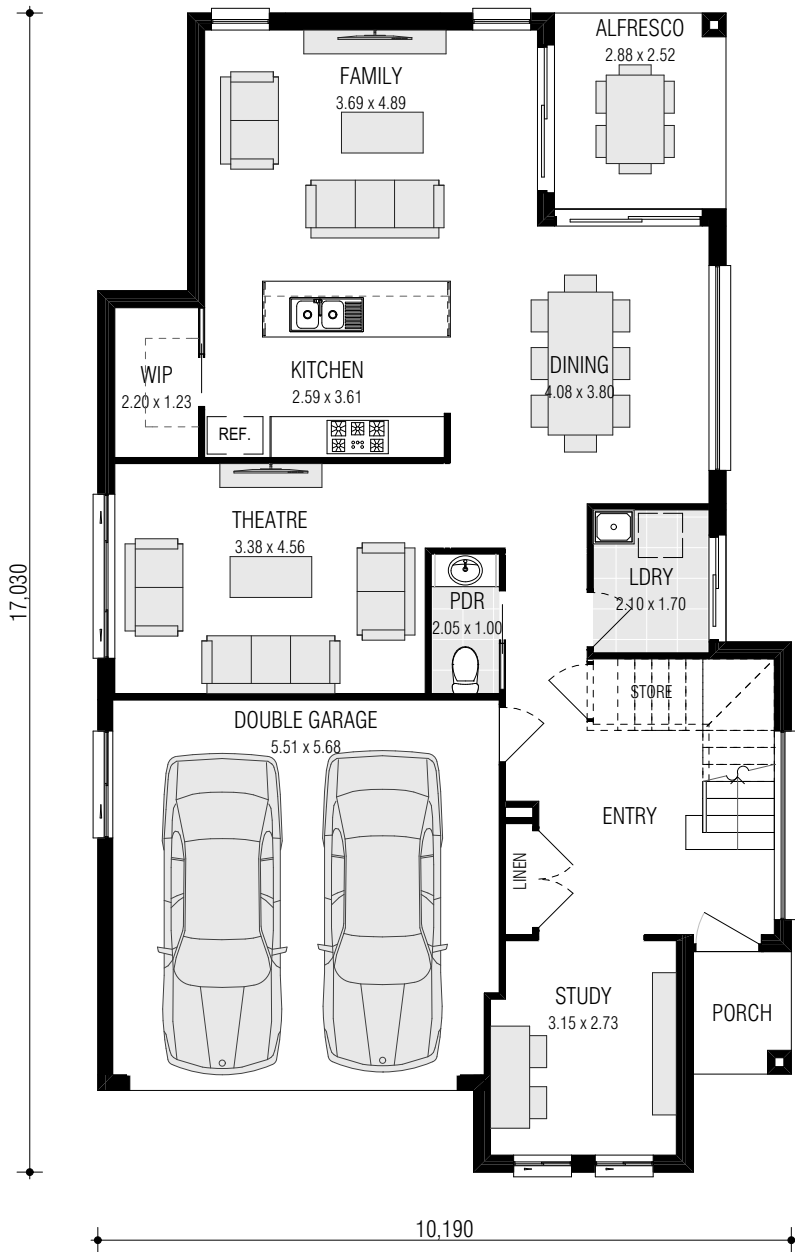


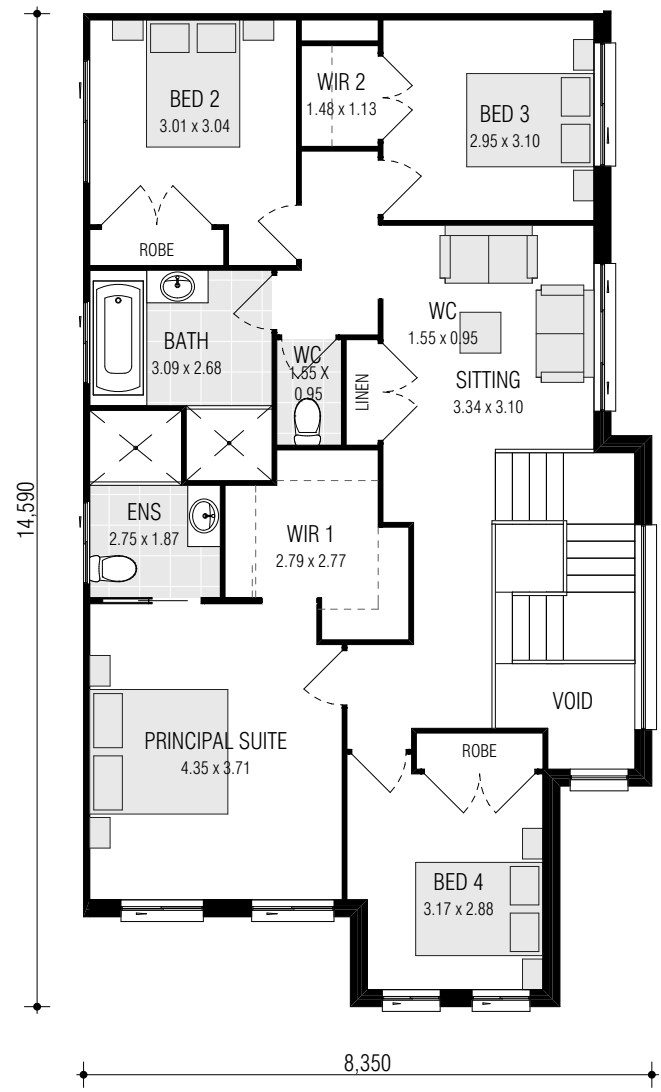
GROUND FLOOR

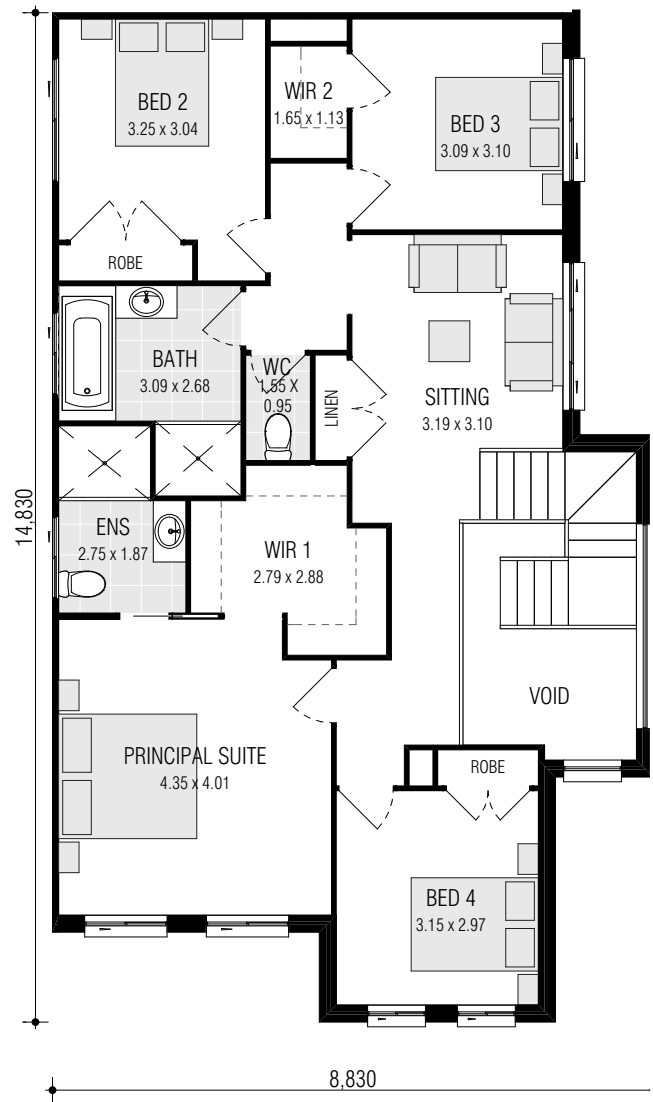
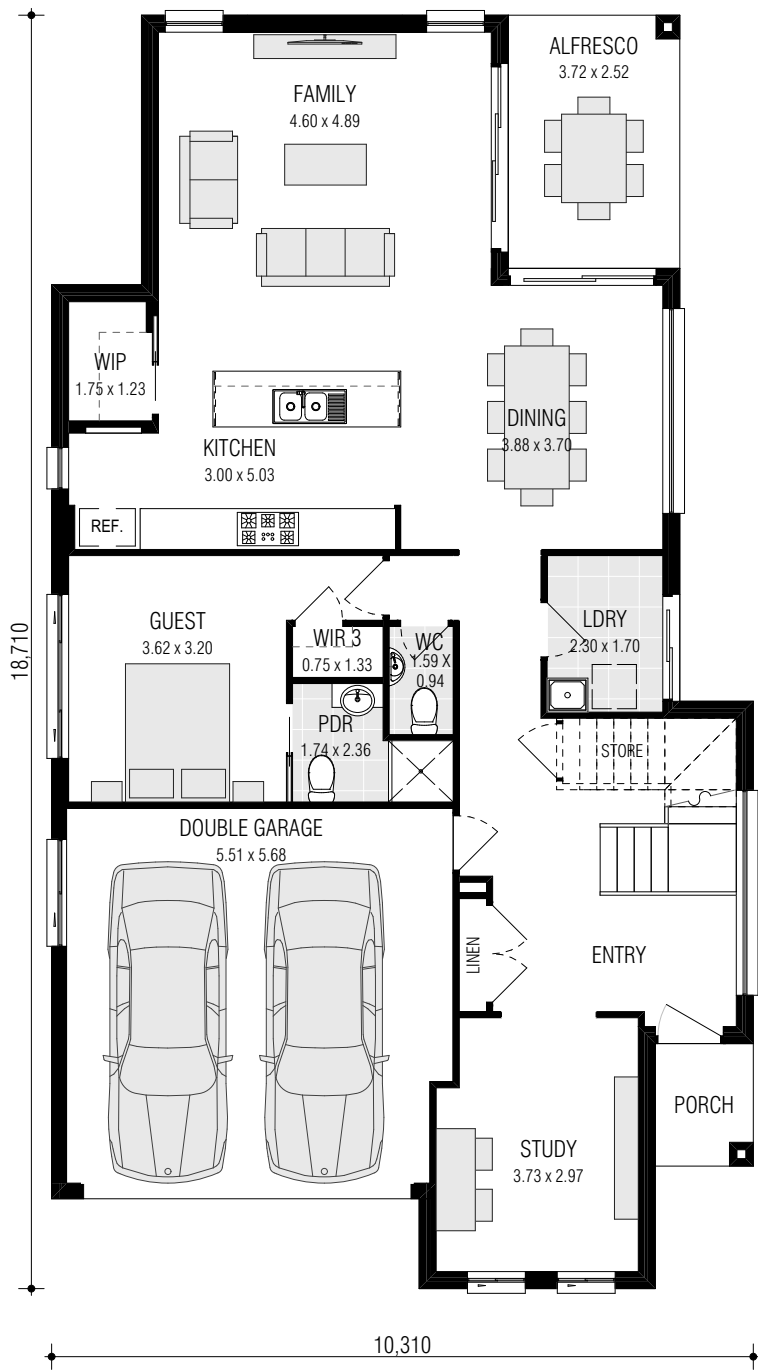


FIRST FLOOR

FITS
25M LONG
BLOCKS*

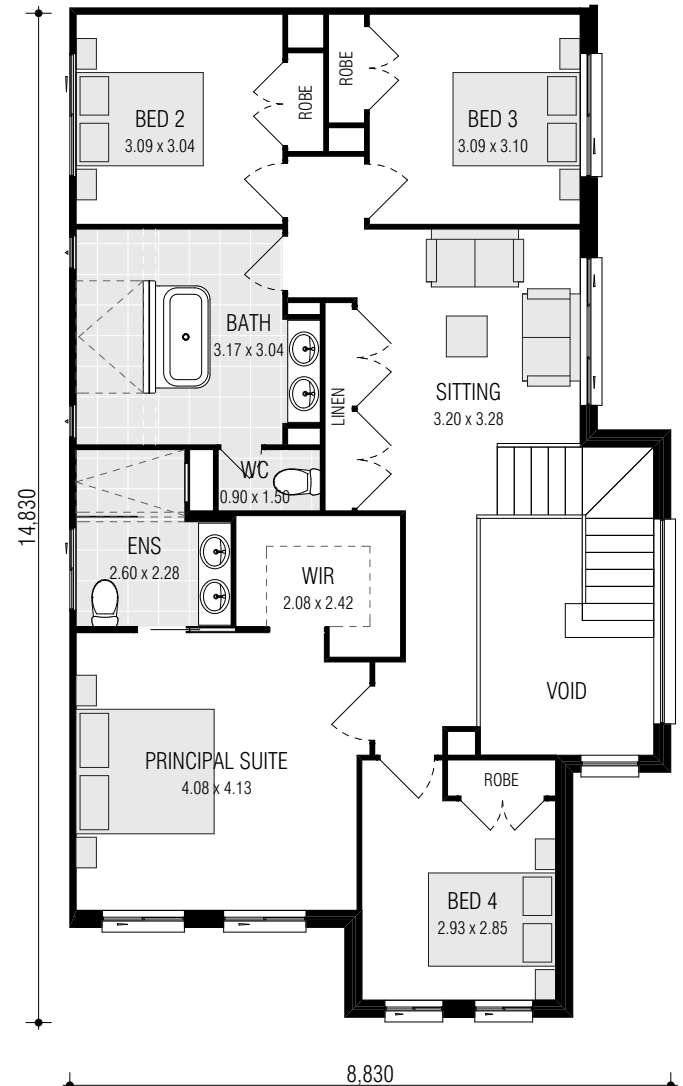
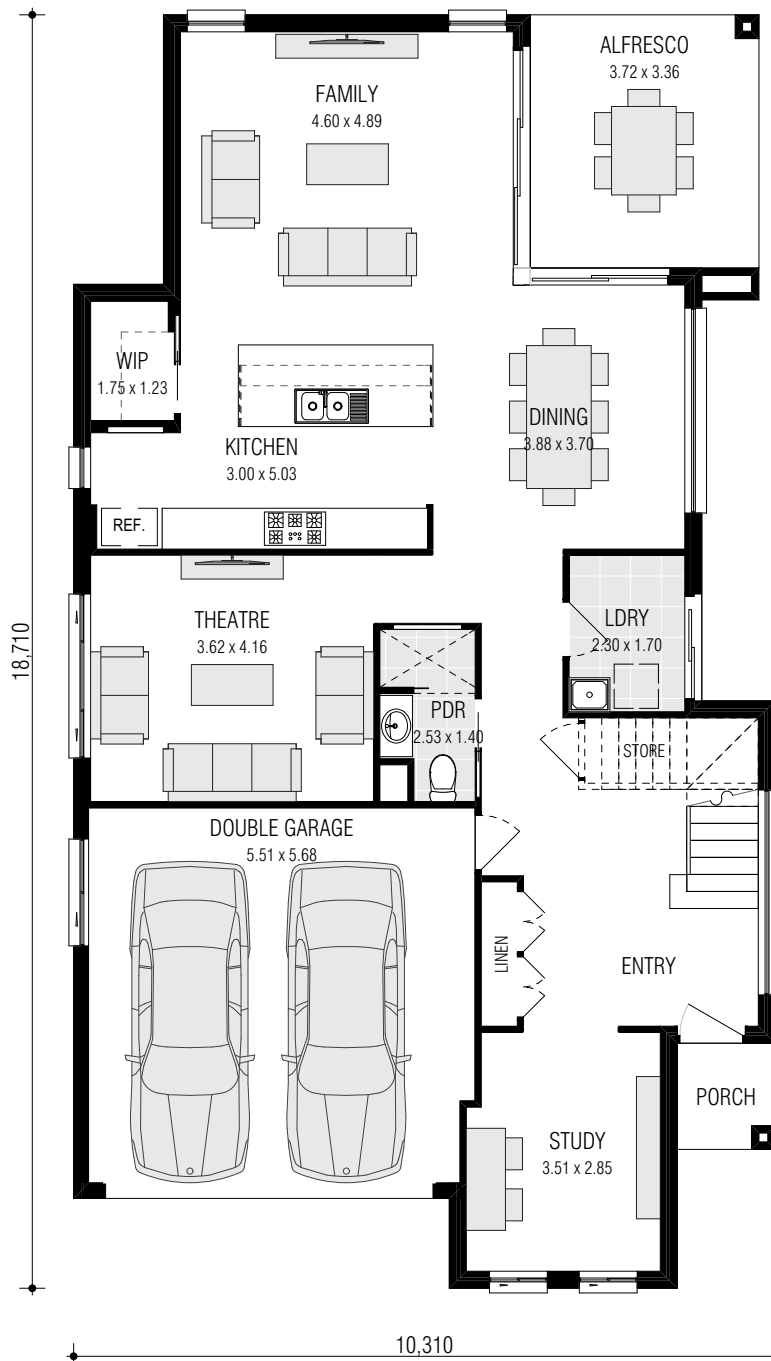






ASTON 30.5 DISTINCT

(ON DISPLAY AT HOMEWORLD LEPPINGTON)

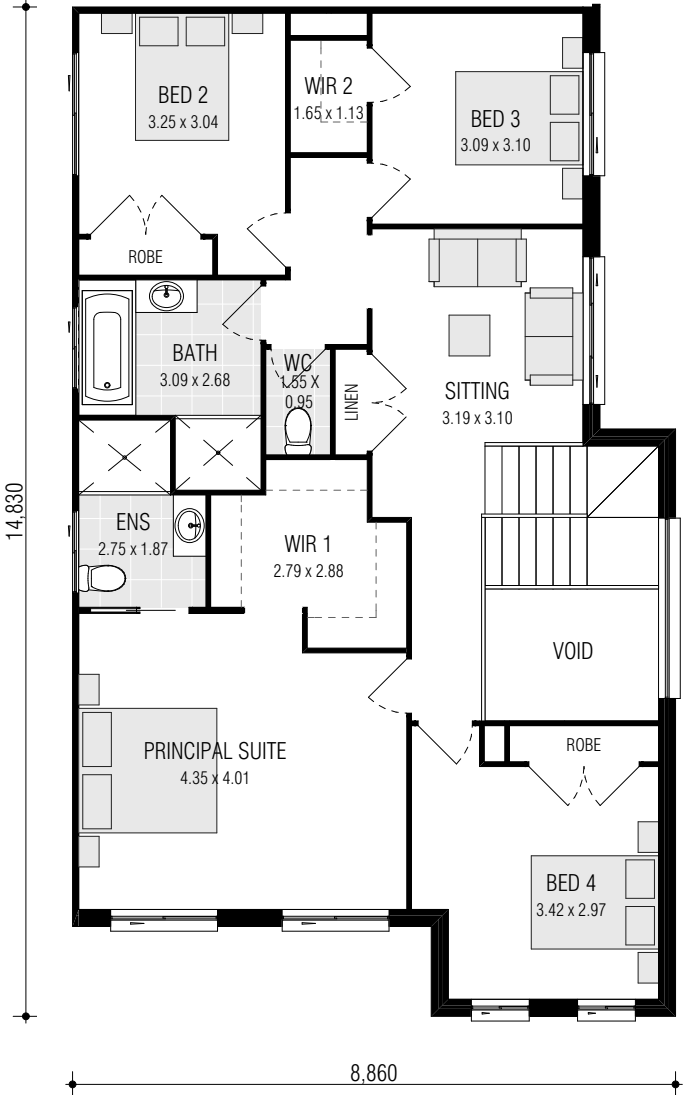
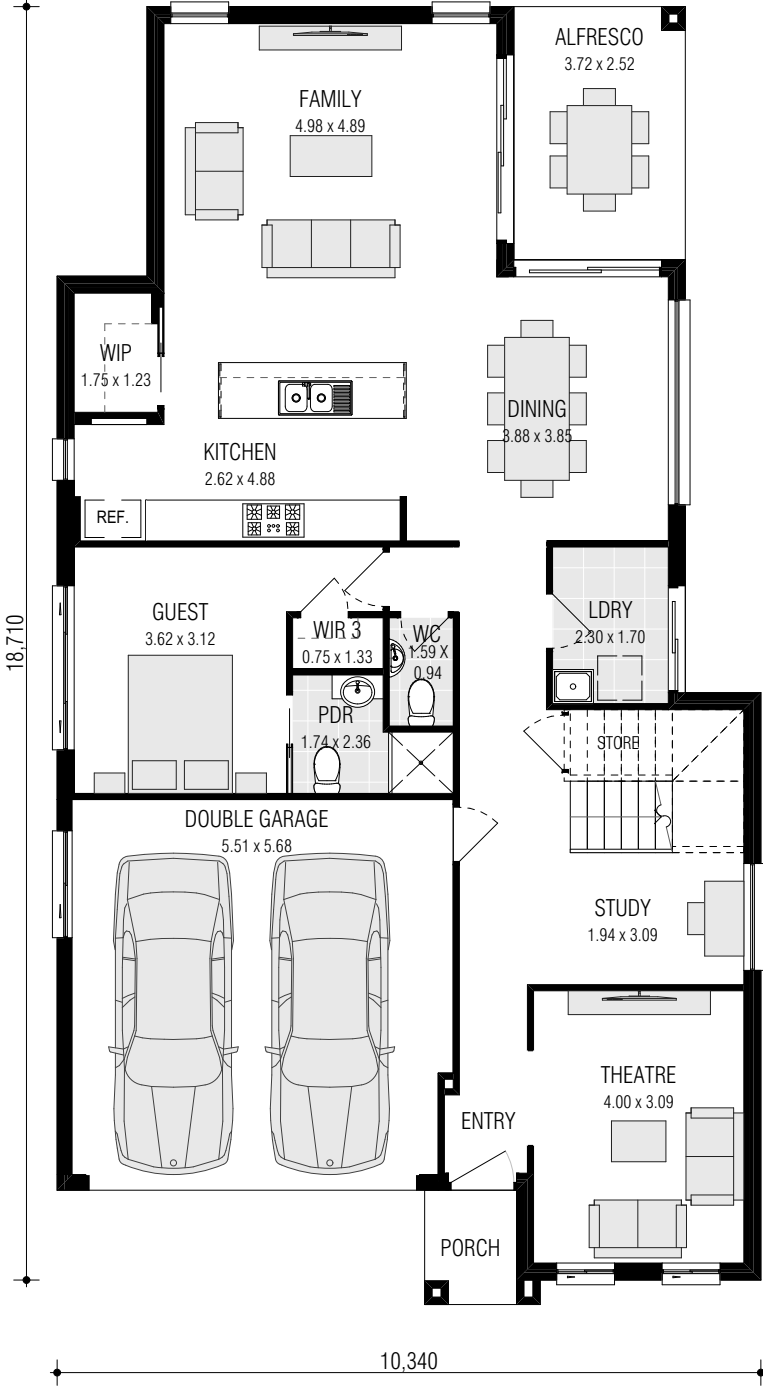


4 2 2

firststyle.com.au

■ FRONTAGE REQUIRED (MINIMUM): 12.71m ■ HOUSE SIZE: 283.43m² ■ SQUARES: 30.5 Sq ■ INCLUDED: ALFRESCO DINING

DISCLAIMER: Photographs & Graphic impressions are representative only to finishes available and may not reflect the finish to the standard design and may also depict fixtures, finishes & features not supplied by Firststyle Homes such as, but not limited to, landscaping & outdoor features, furnishing, decorative items, window furnishing. Dimensions are approximate only and may vary according to façade. Firststyle Homes reserves the right to revise specifications, inclusions, materials and suppliers without notice. Firststyle Homes Pty Ltd ABN 59 087 773 779 B.L. 113412C





ASTON TRADITIONAL



AURA



LETANA



ESPLANADE ON DISPLAY AT HOMEWORLD LEPPINGTON



MODENA



OXLEY BRICK



AURA MKII (26.4 & 31.0)



TRADITIONAL MKI RENDER (26.4 & 31.0)



TRADITIONAL MKII (26.4 & 31.0)



TRADITIONAL MKI BRICK (26.4 & 31.0)

DISPLAY CENTRE LOCATIONS

1. EDMONDSON PARK

VILLAGE SQUARE DISPLAY VILLAGE

9 Clement Road Edmondson Park NSW 2174

PH: 9608 9777 E: edpark@firststyle.com.au

ON DISPLAY: Waterhouse, Chatswood,
Keswick & Ashmore

2. LEPPINGTON

HOMEWORLD LEPPINGTON

58 Arkenstone Way Leppington NSW 2179

PH: 9606 4175 E: emerald hills@firststyle.com.au

ON DISPLAY: Riverside & Aston

3. ORAN PARK

ORAN PARK TOWN

6 Webber Loop Oran Park NSW 2570

PH: 9043 5890 E: oranpark@firststyle.com.au

ON DISPLAY: Fitzroy, Montebello,
Burnley Duet & Silkwood

4. SPRING FARM

EVERGREEN SPRING FARM

120 Springs Road Spring Farm NSW 2570

PH: 9138 7753 E: springfarm@firststyle.com.au

ON DISPLAY: Keswick & Nevada

5. MARSDEN PARK

HOMEWORLD MARSDEN PARK

27 Ellison Street Marsden Park NSW 2765

PH: 8630 0429 E: marsdenpark@firststyle.com.au

ON DISPLAY: Norwood & Montara

6. BOX HILL

HOMEWORLD BOX HILL

14 Noah Street, Box Hill NSW 2765

PH: 8630 2020 E: boxhill@firststyle.com.au

ON DISPLAY: Grantham, Avoca & Clovelly



1300 FIRSTSTYLE
3 4 7 7 8 9 5 3
firststyle.com.au

DISCLAIMER: Photographs & Graphic impressions are representative only to finishes available and may not reflect the finish (Display Homes may vary based on design) to the standard design and may also depict fixtures, finishes & features not supplied by Firststyle Homes such as, but not limited to, landscaping & outdoor features, furnishing, decorative items, window furnishing. Dimensions are approximate only and may vary according to façade. Firststyle Homes reserves the right to revise specifications, inclusions, materials and suppliers without notice. Firststyle Homes Pty Ltd ABN 59 087 773 779 B.L.113412C