

MONTARA SERIES

ON DISPLAY AT MARSDEN PARK

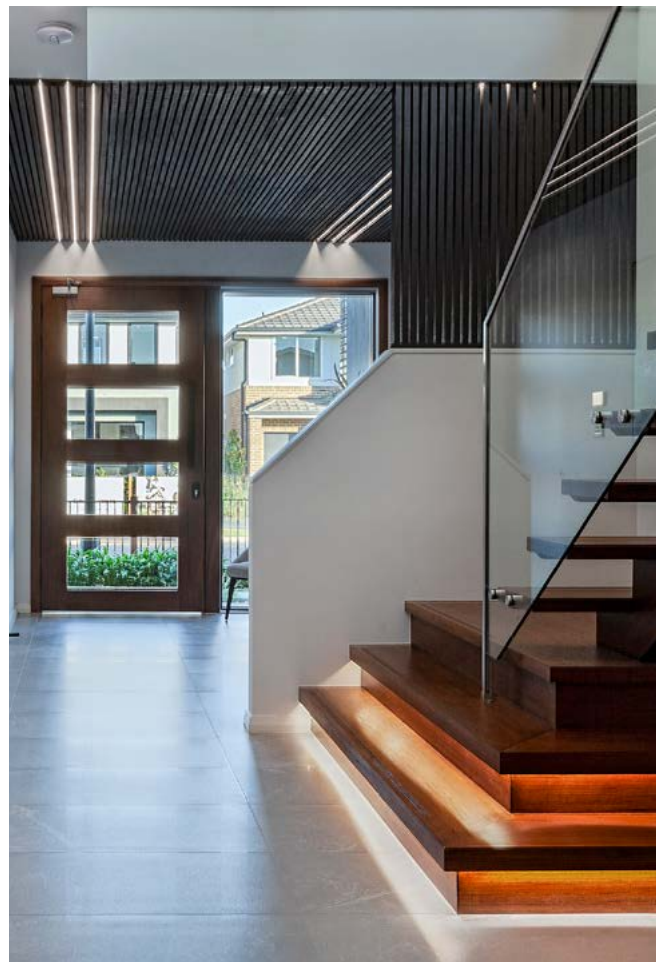


live your life in style

MONTARA VERGE FACADE



THE **MONTARA** SERIES ENSURES
THAT YOU WON'T NEED TO
COMPROMISE ON SPACE. WITH FOUR
BEDROOMS, THREE LIVING AREAS AND
ALFRESCO ALL FITTING ON A 10 METRE
WIDE BLOCK, MAKING IT PERFECT FOR
GROWING FAMILIES.



MONTARA SERIES FACADE OPTIONS



CLASSIC



NEWSTEAD



OXLEY SLATE



LOGAN V2

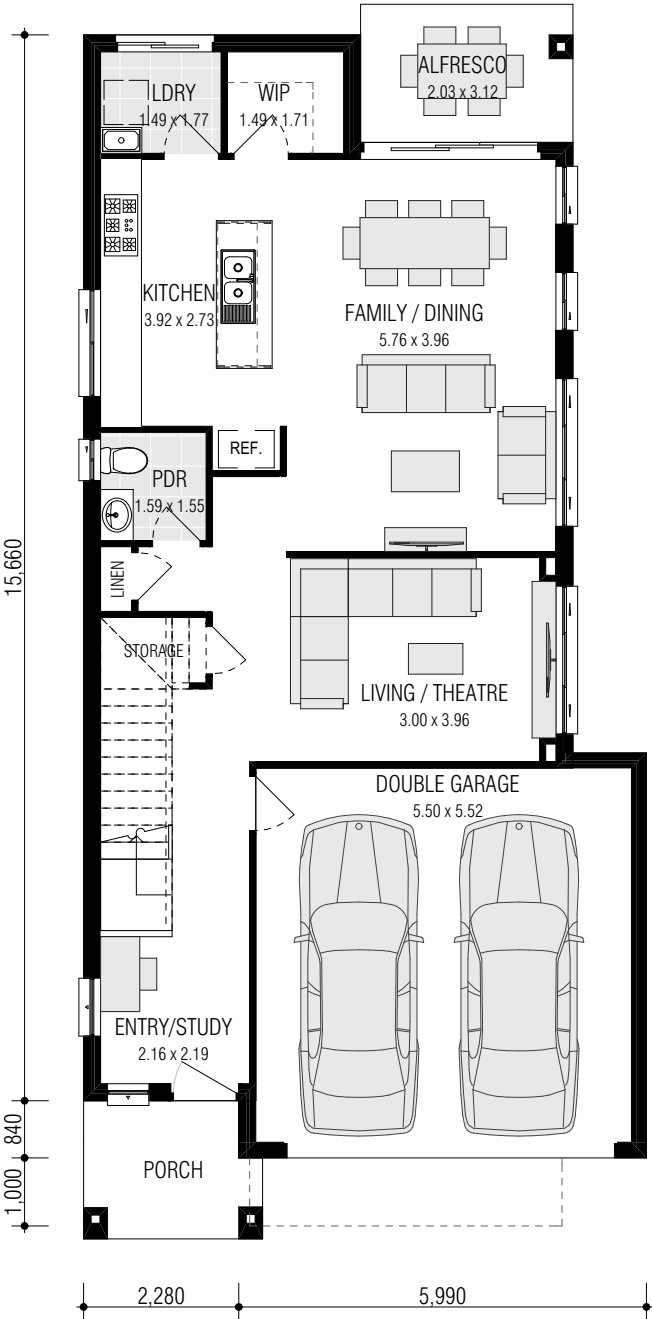


MONTARA SEYMOUR

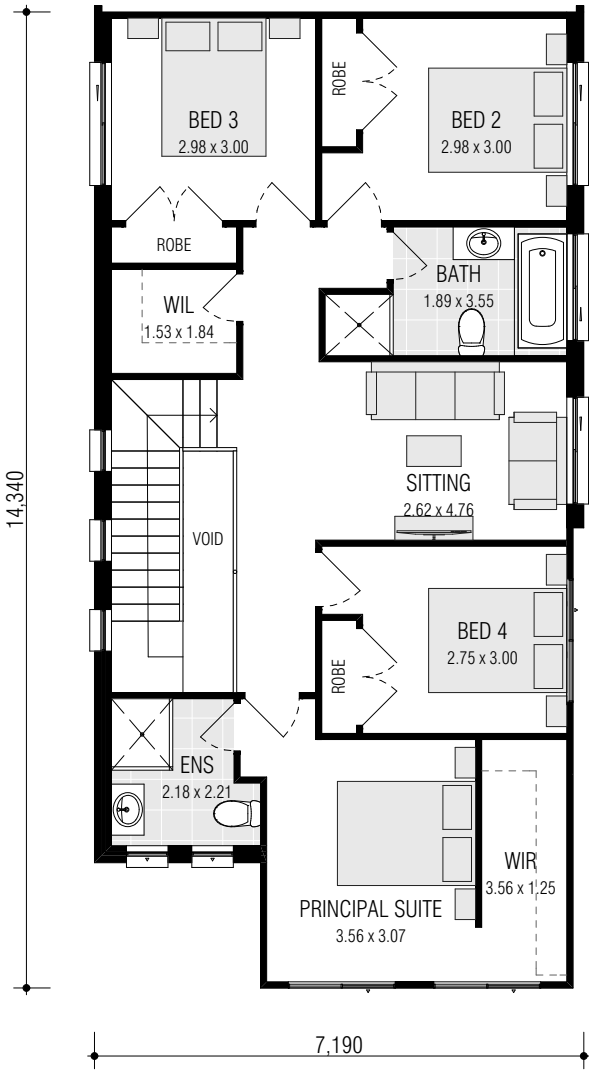


MONTARA APOLLO

FITS
25M LONG
BLOCKS*



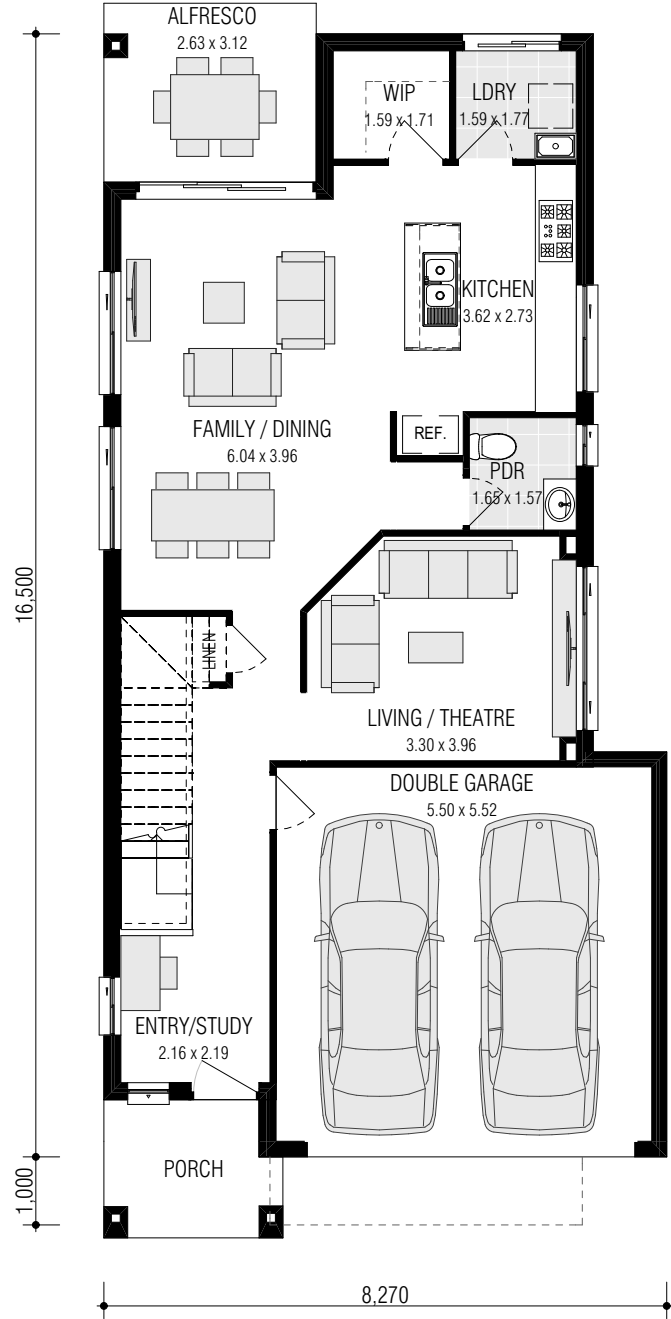
GROUND FLOOR



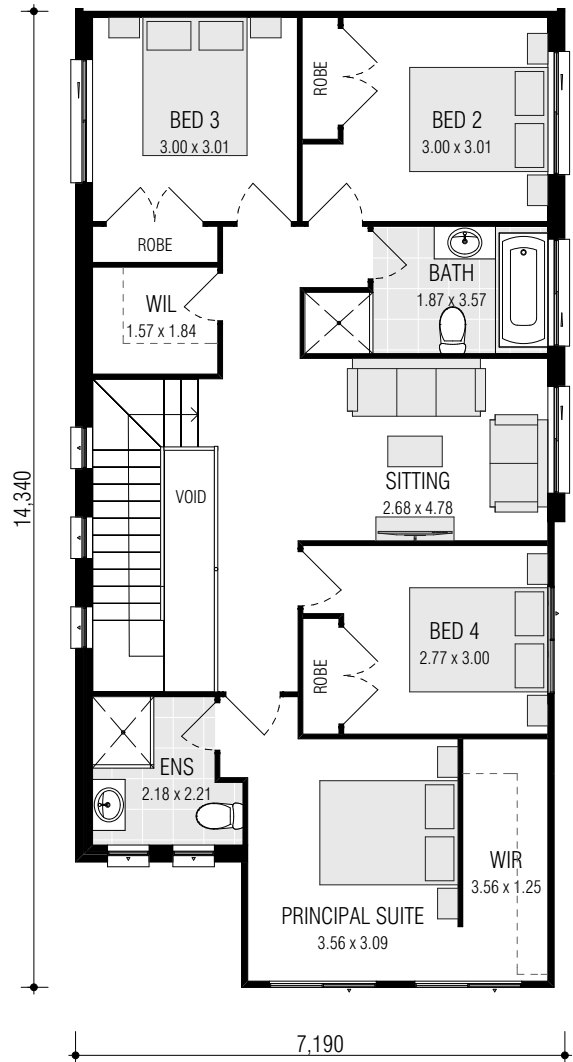
FIRST FLOOR

MONTARA 24.4 MKII

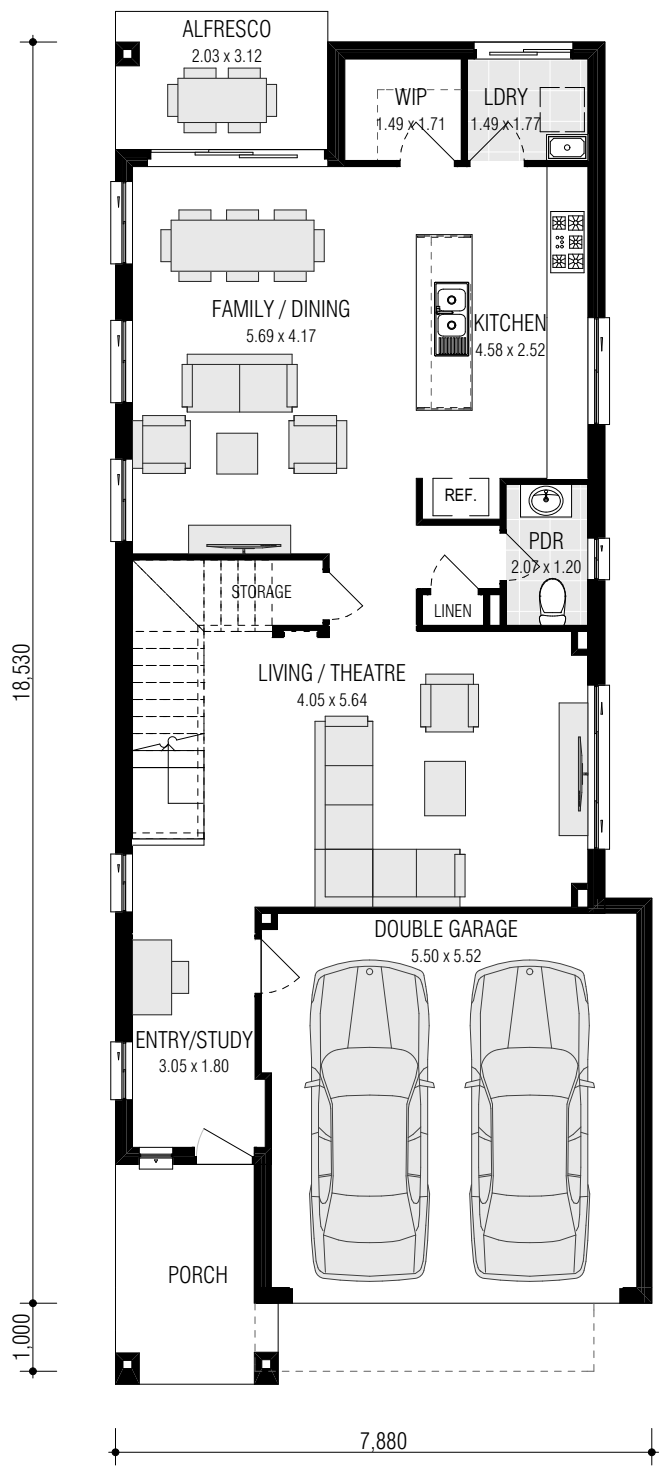
FITS
25M LONG
BLOCKS*



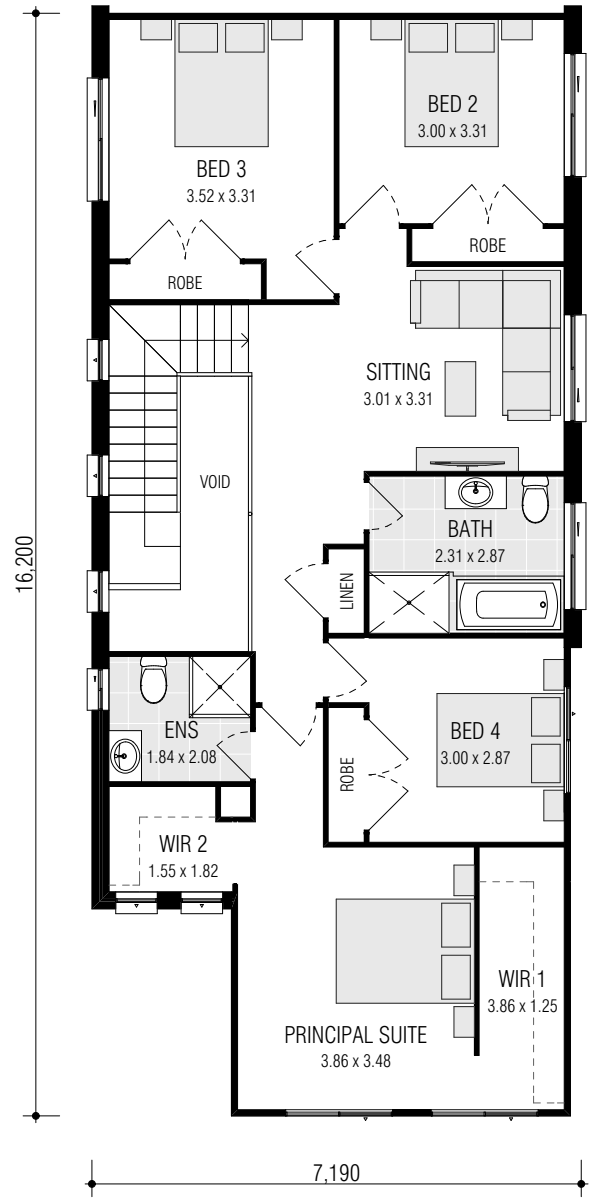
GROUND FLOOR



FIRST FLOOR

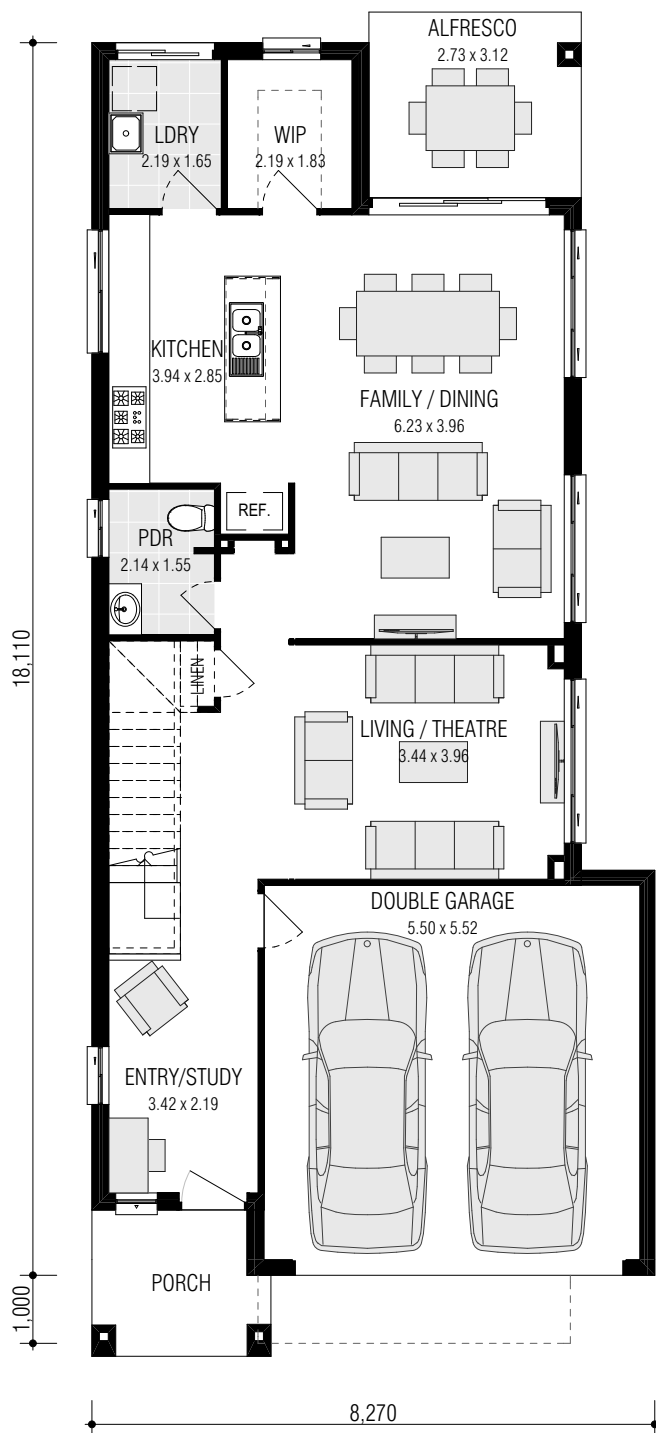


GROUND FLOOR

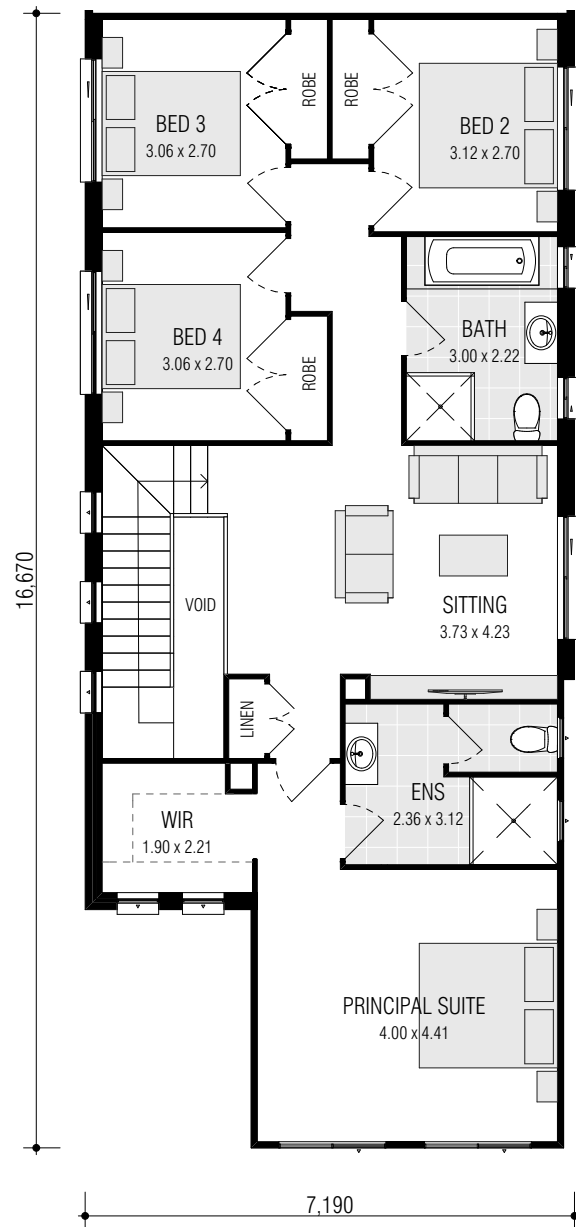


FIRST FLOOR

MONTARA 27.1

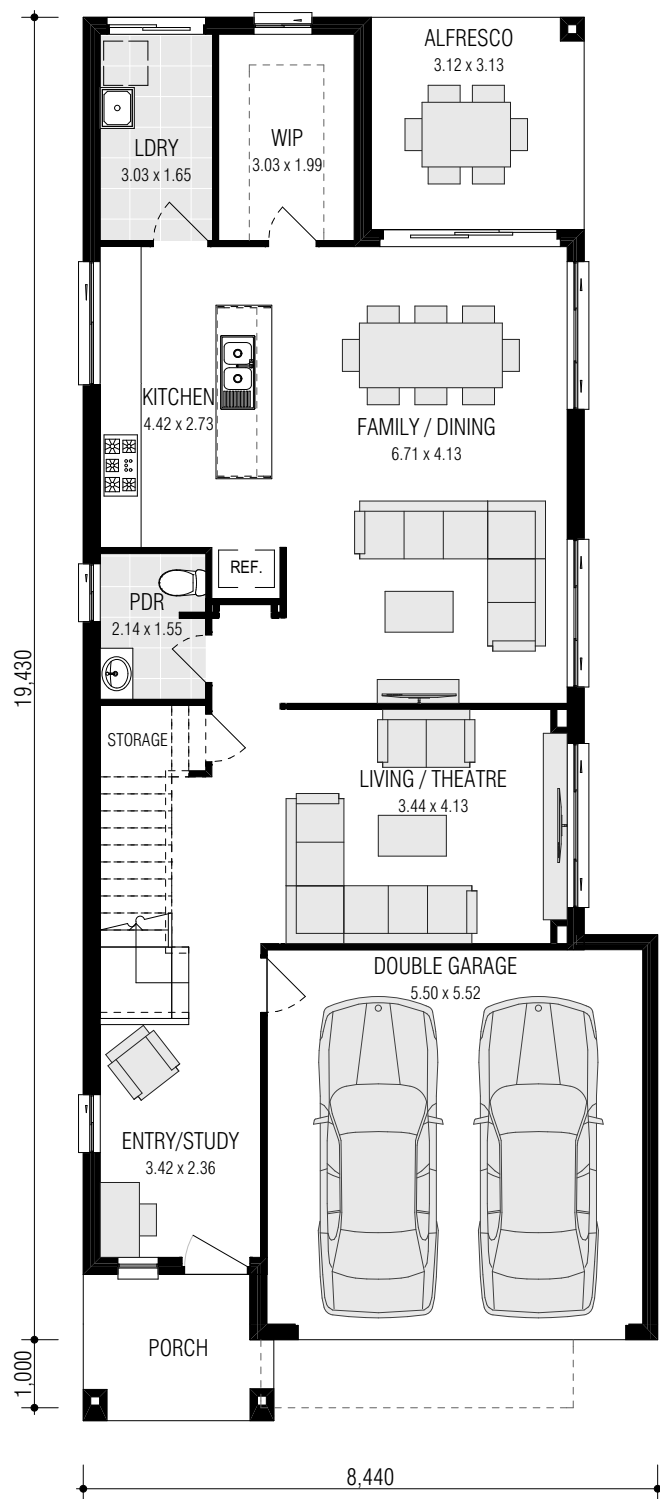


GROUND FLOOR

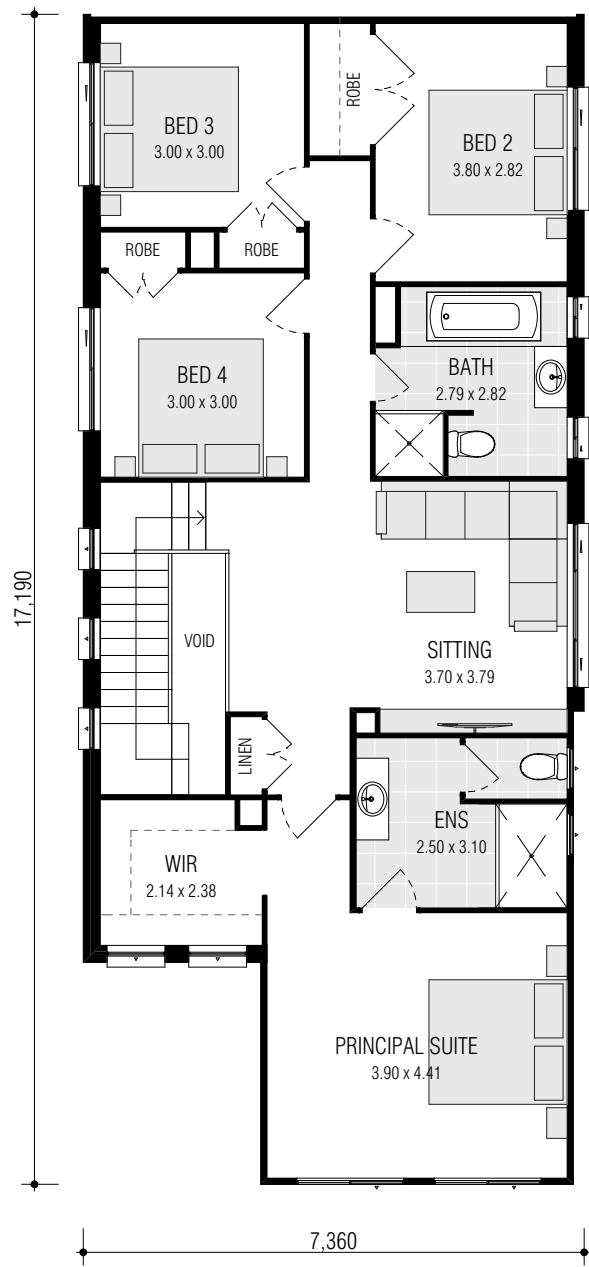


FIRST FLOOR

MONTARA 29.0

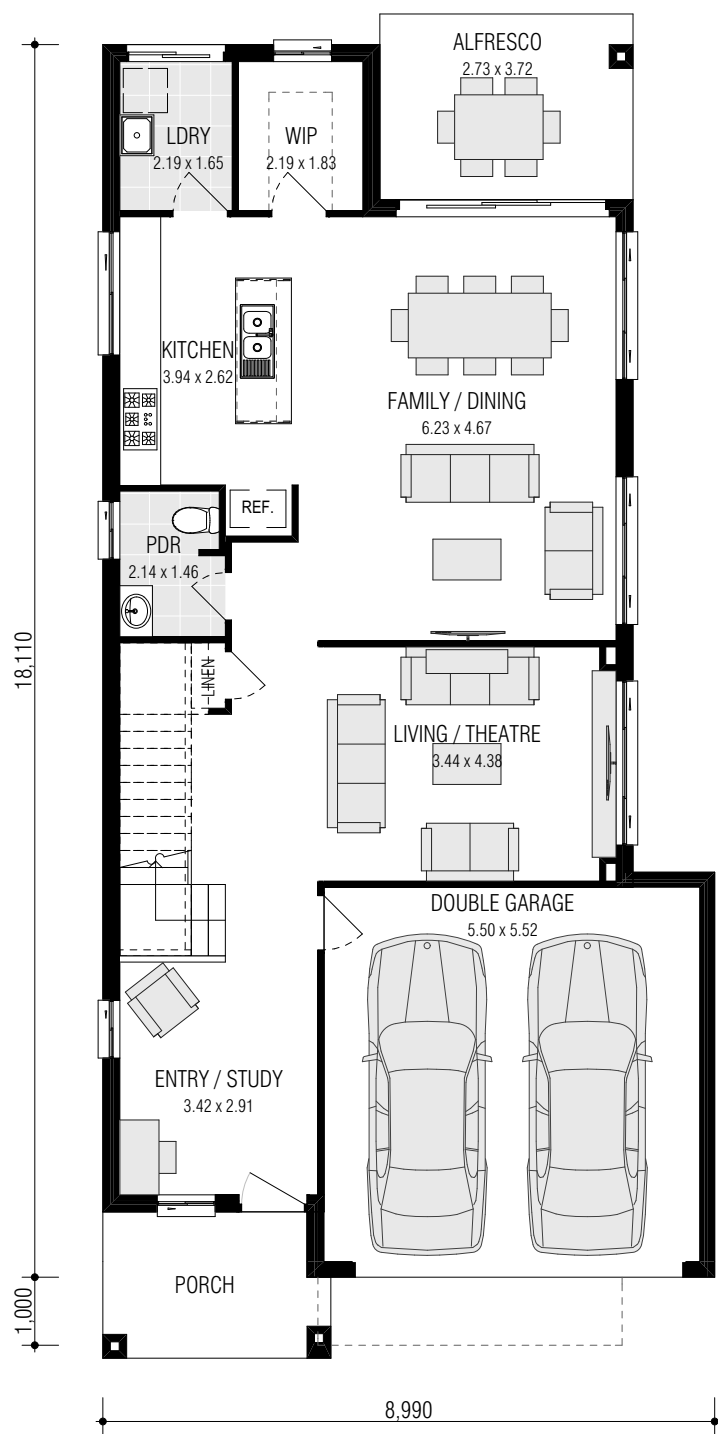


GROUND FLOOR

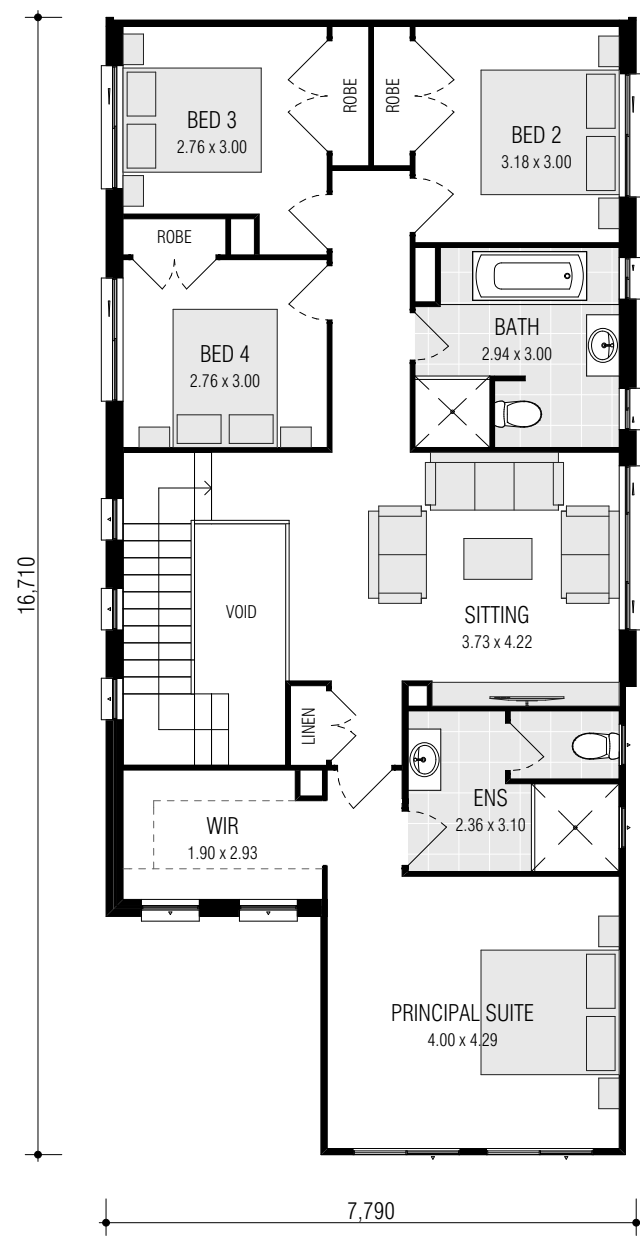


FIRST FLOOR

MONTARA 29.2

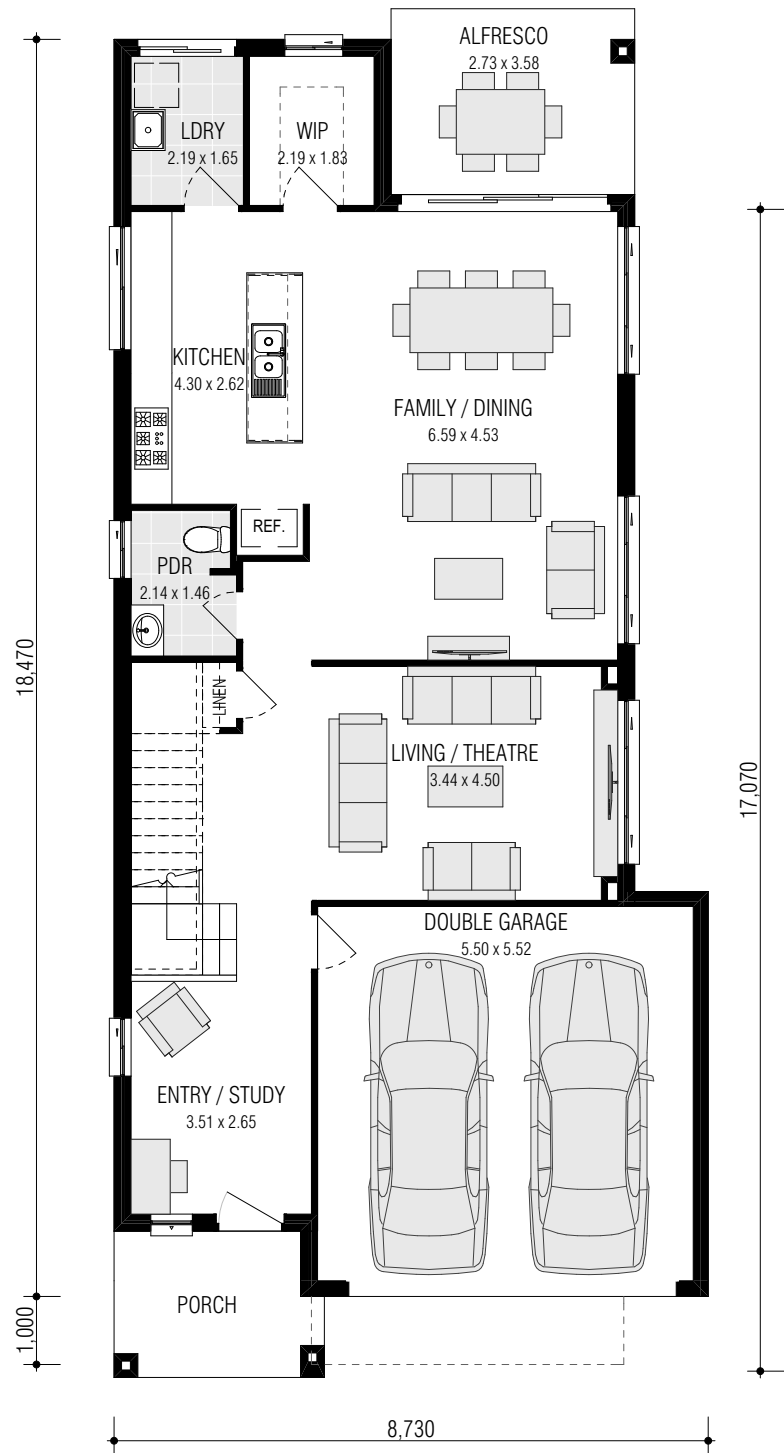


GROUND FLOOR

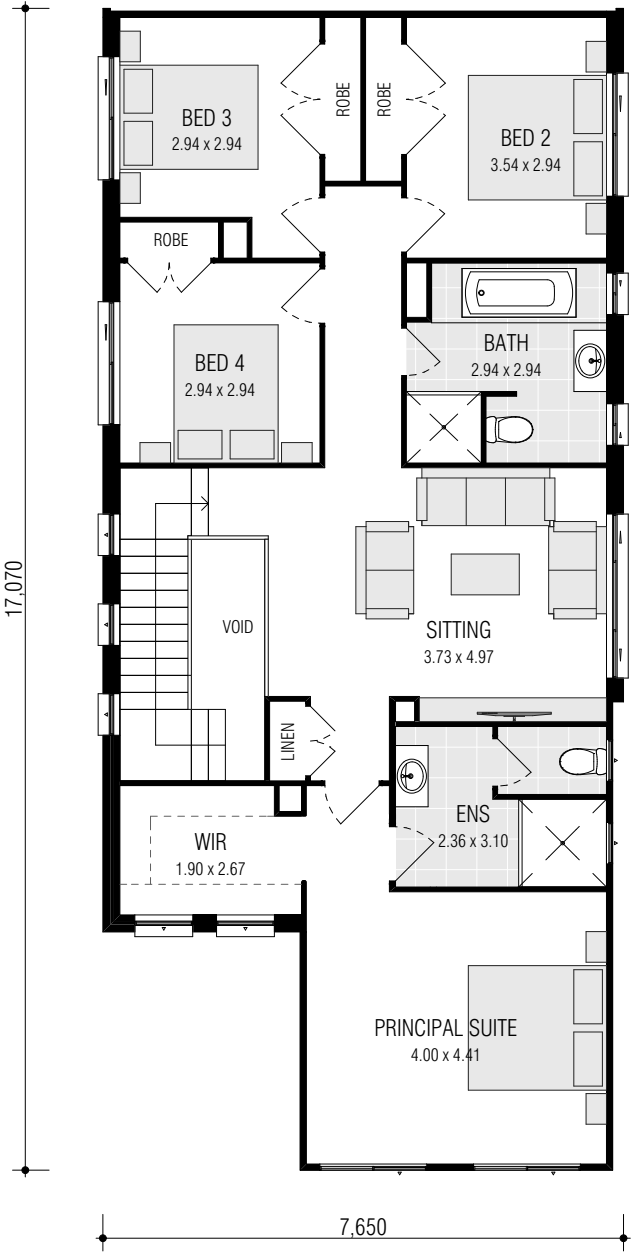


FIRST FLOOR

MONTARA 29.3

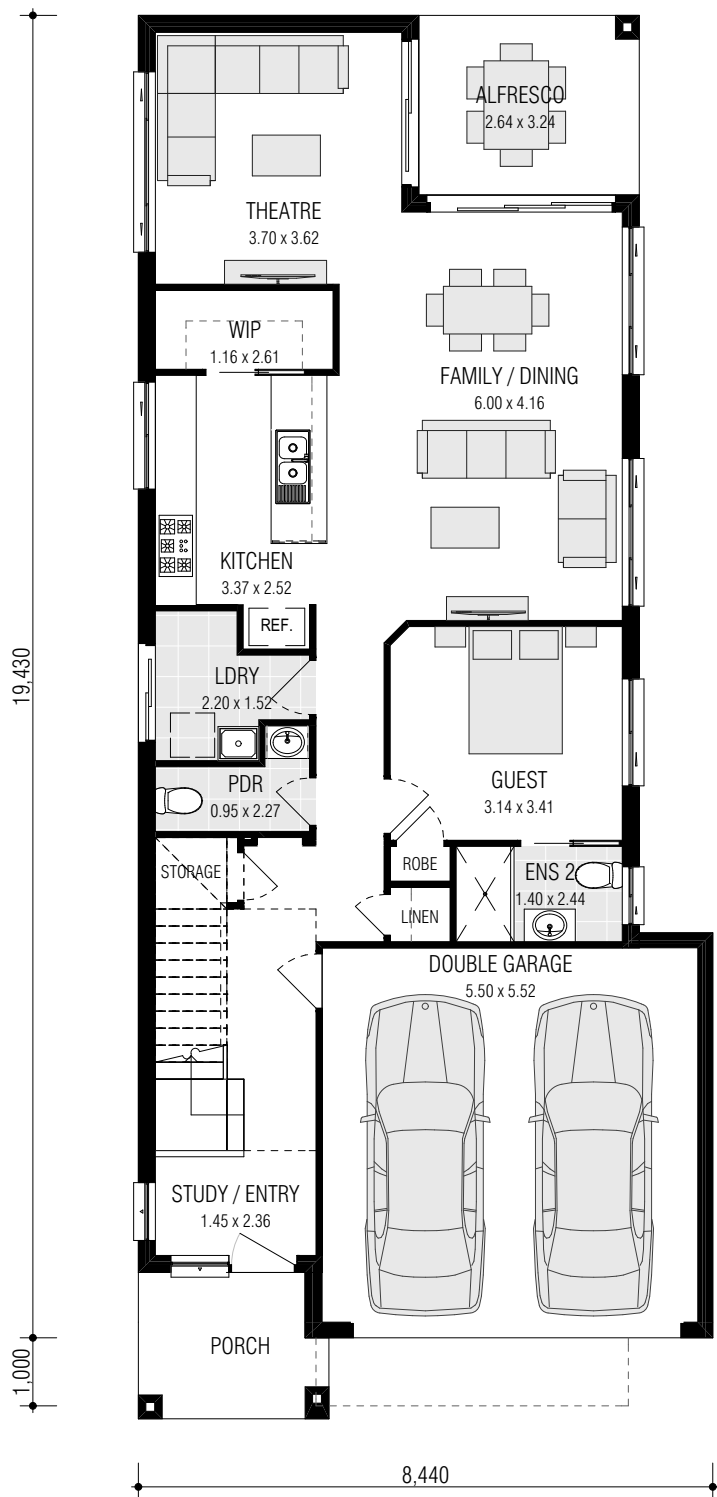


GROUND FLOOR

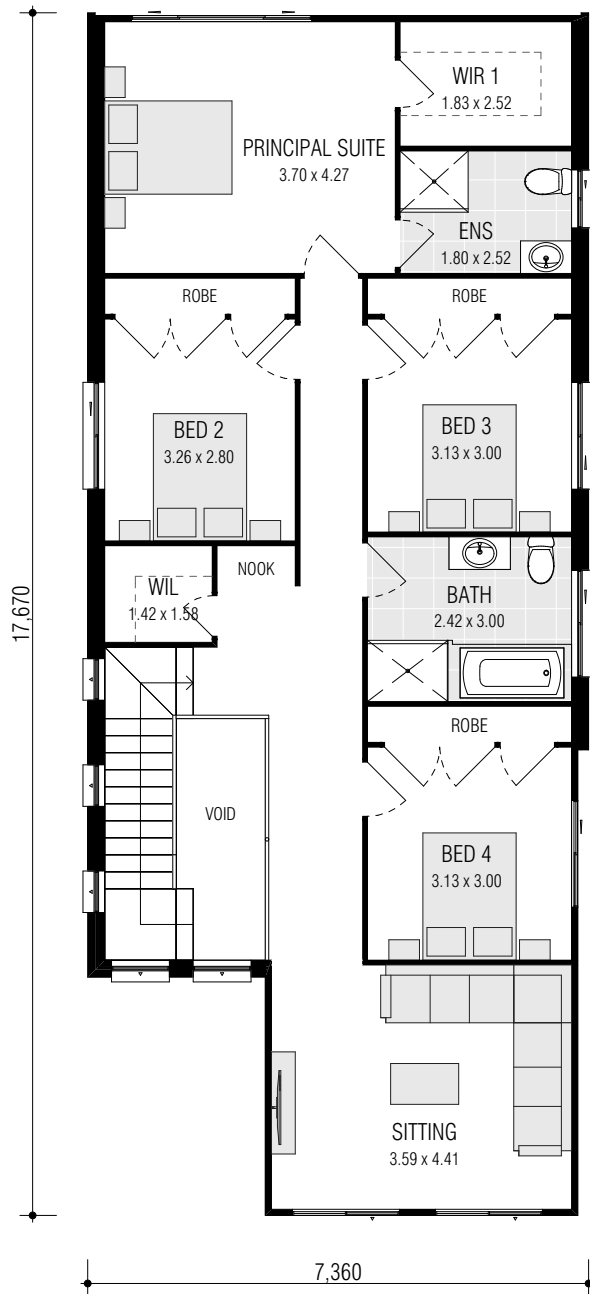


FIRST FLOOR

MONTARA 29.3 MKII

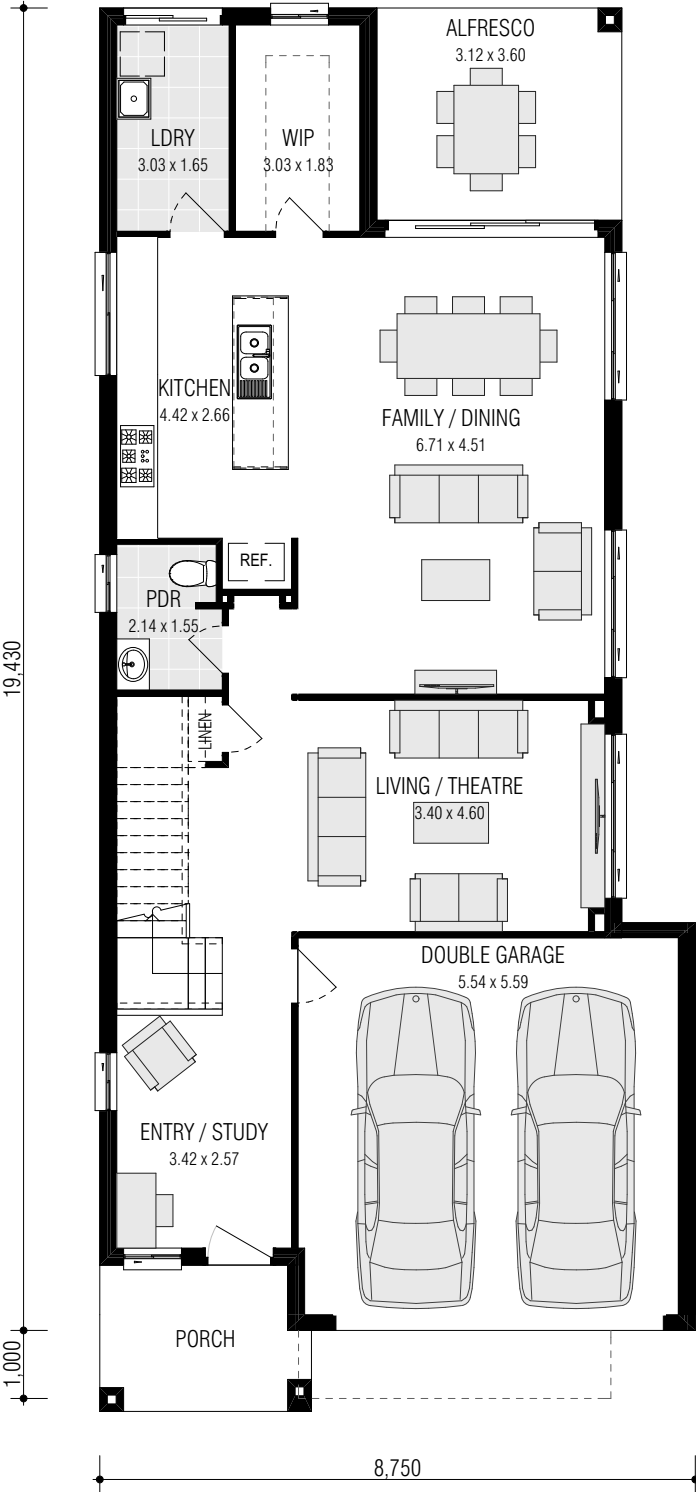


GROUND FLOOR

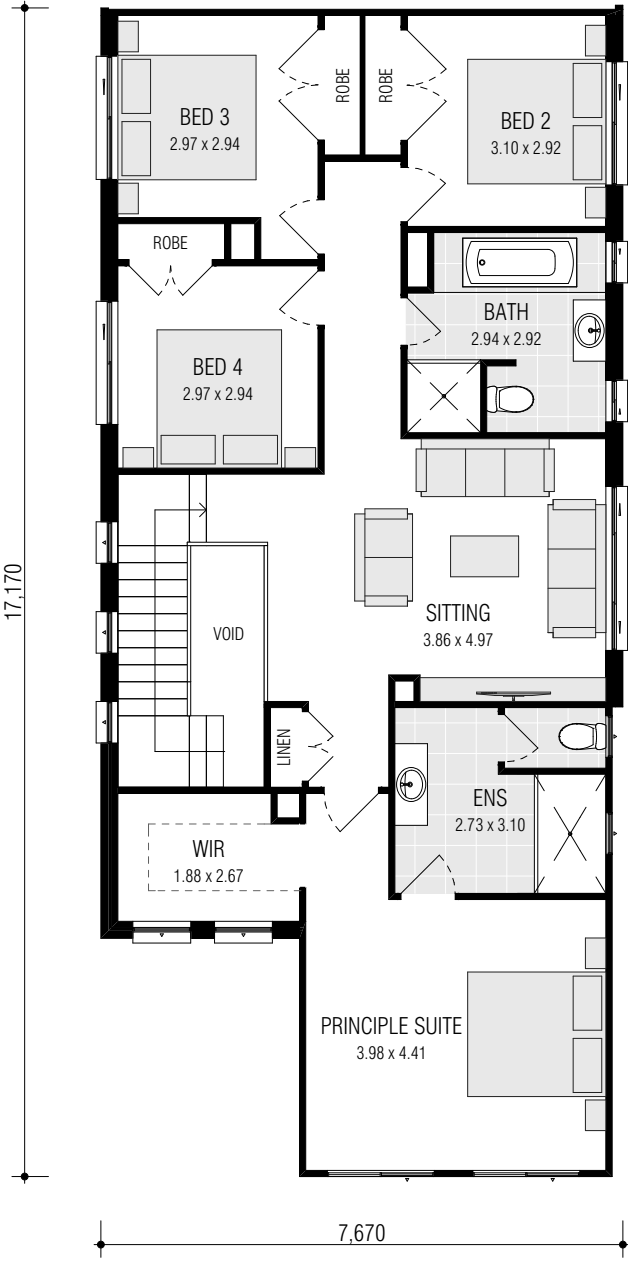


FIRST FLOOR

MONTARA 30.0

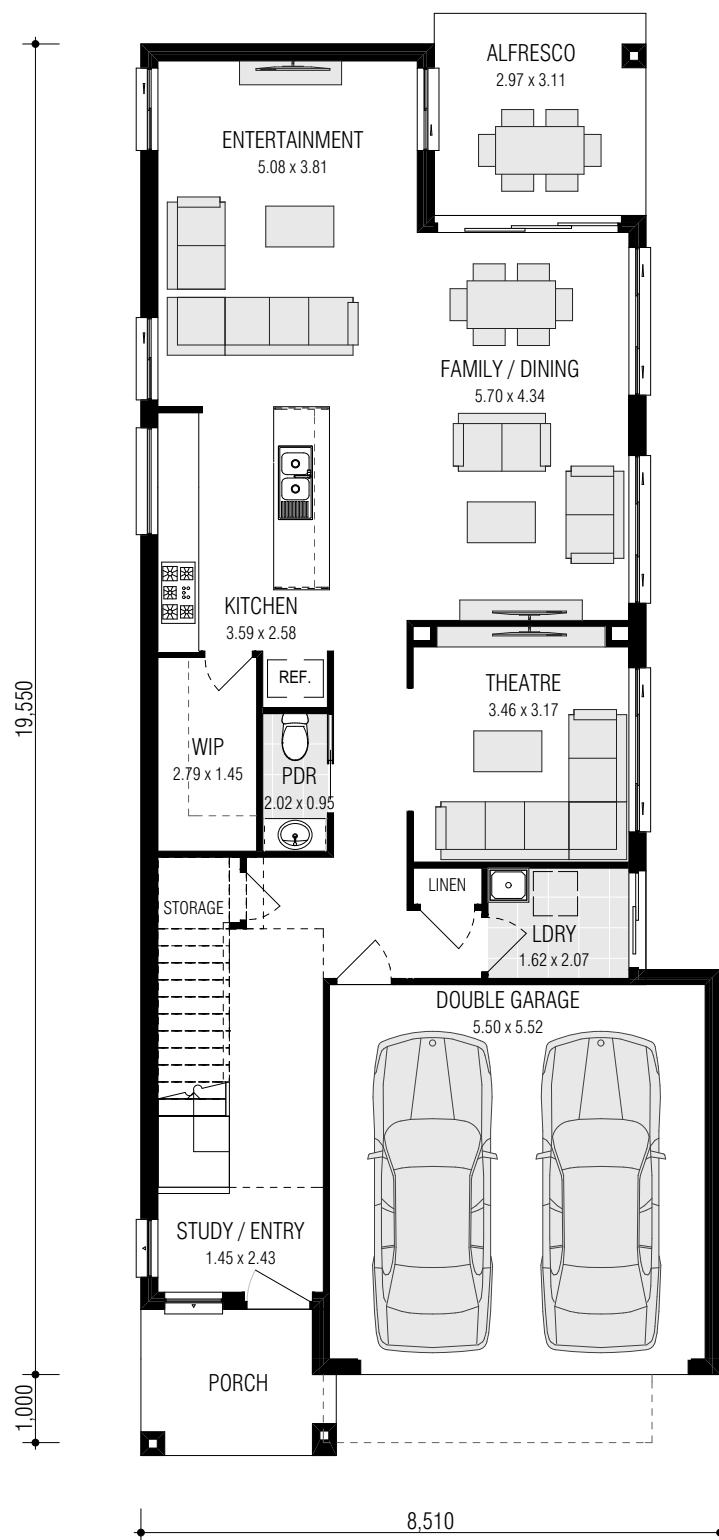


GROUND FLOOR

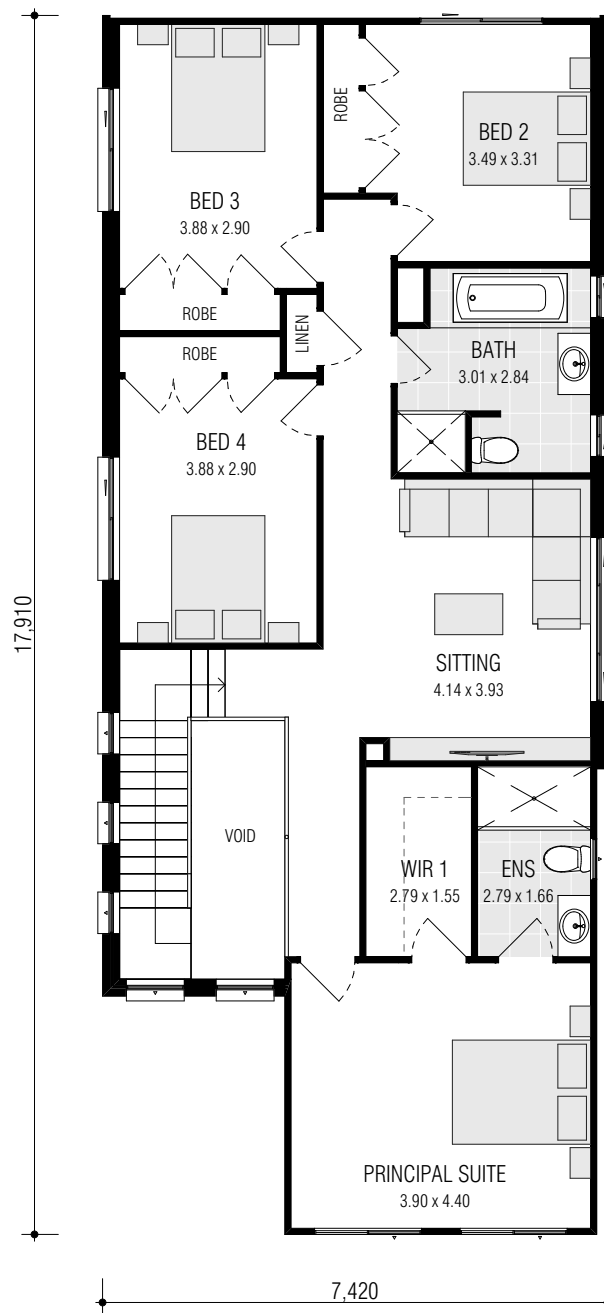


FIRST FLOOR

MONTARA 30.0 MKII

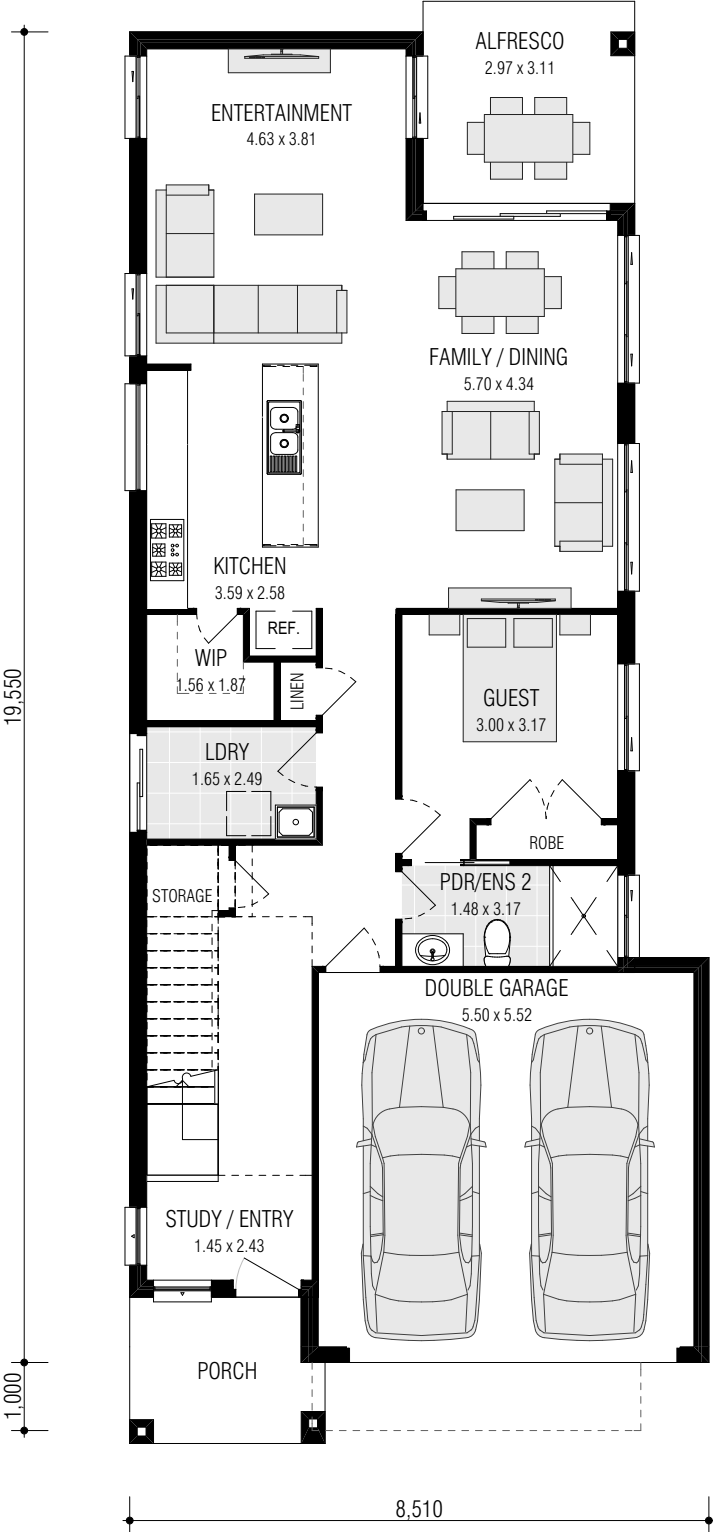


GROUND FLOOR

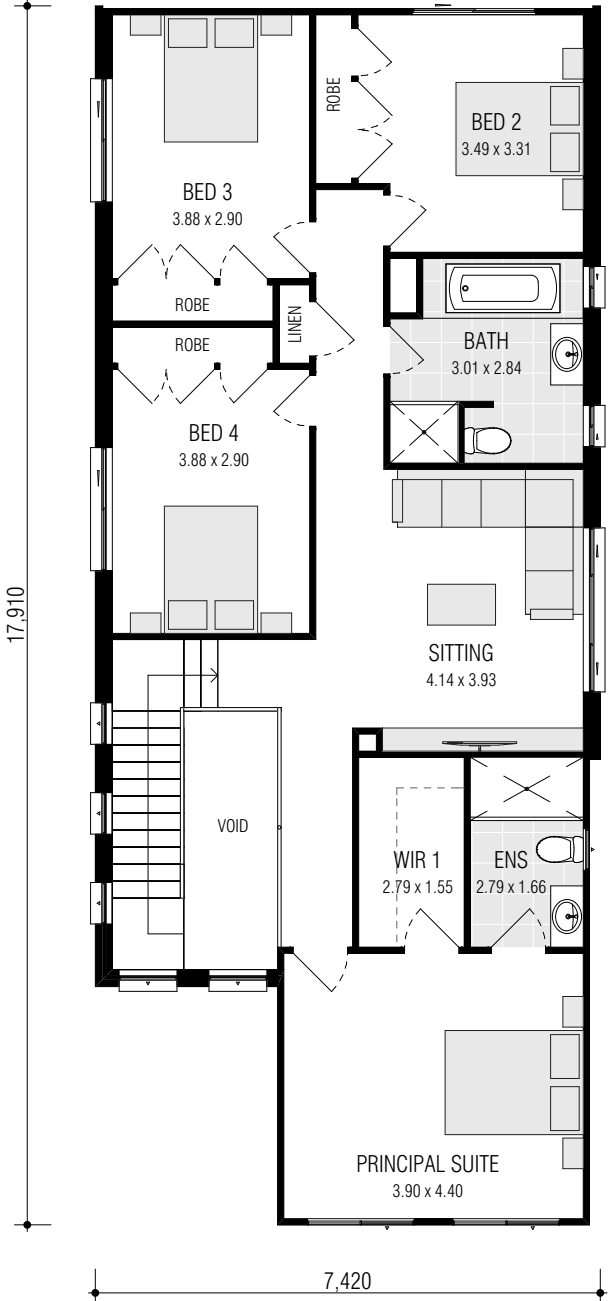


FIRST FLOOR

MONTARA 30.0 MKIII

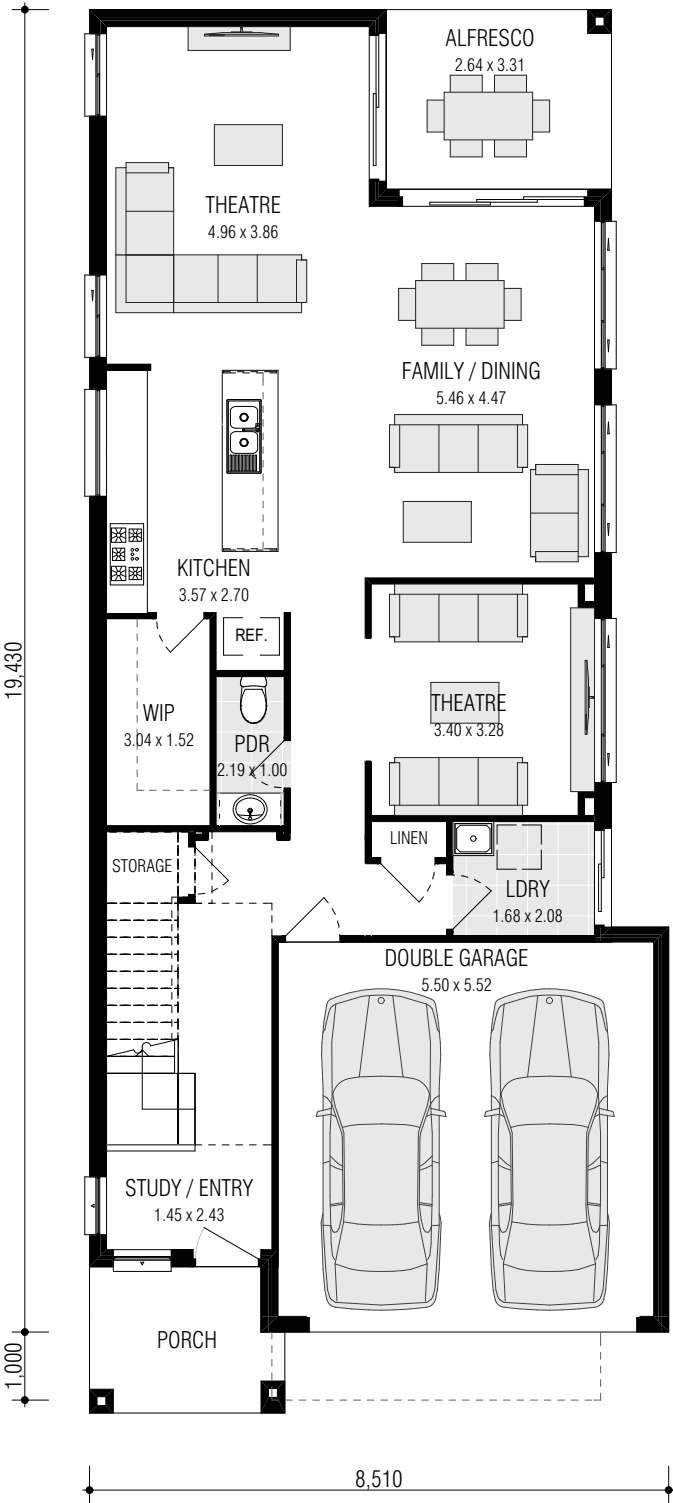


GROUND FLOOR

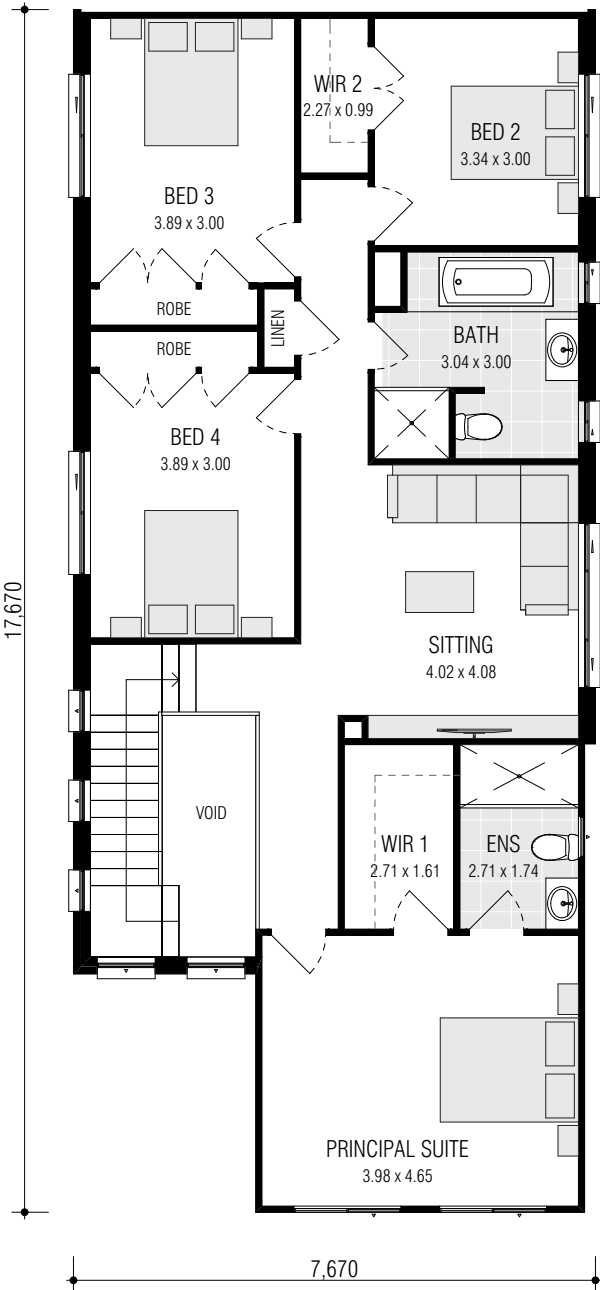


FIRST FLOOR

MONTARA 30.4

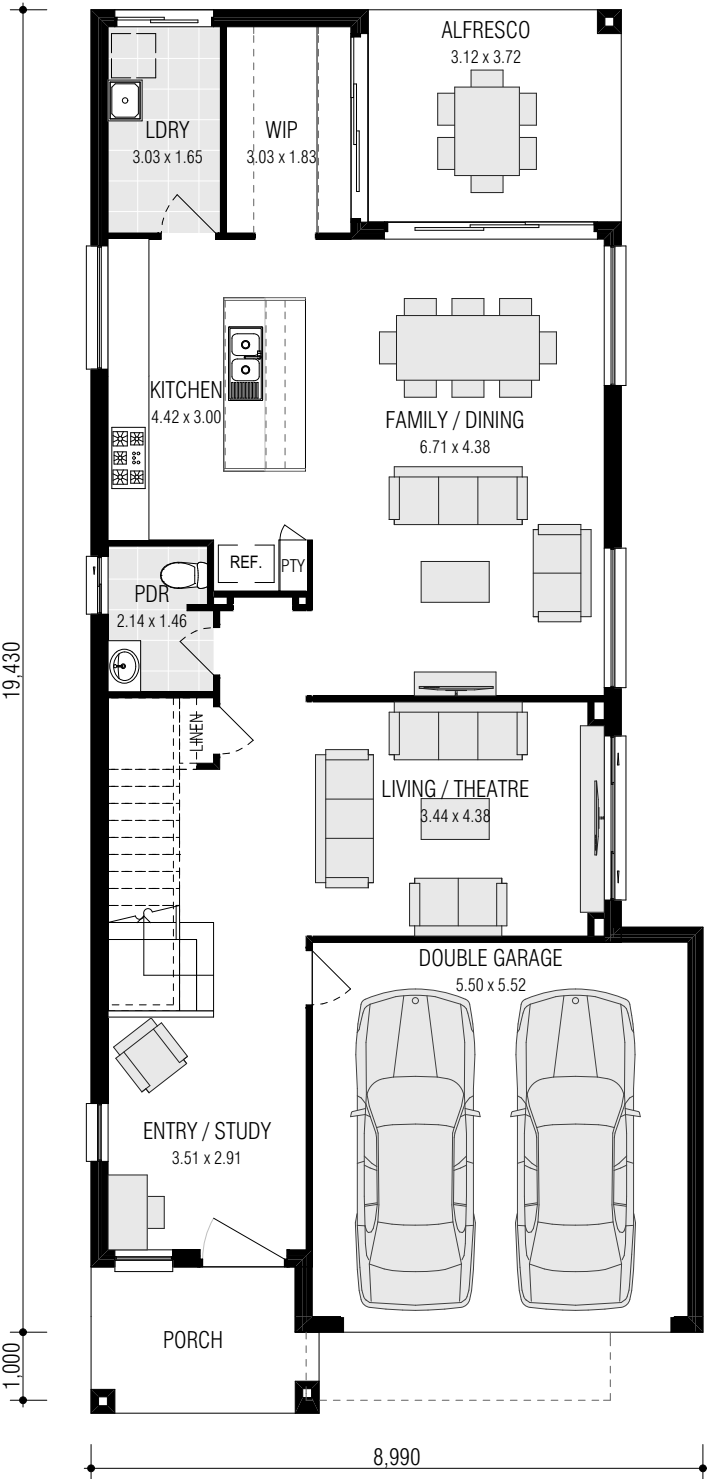


GROUND FLOOR

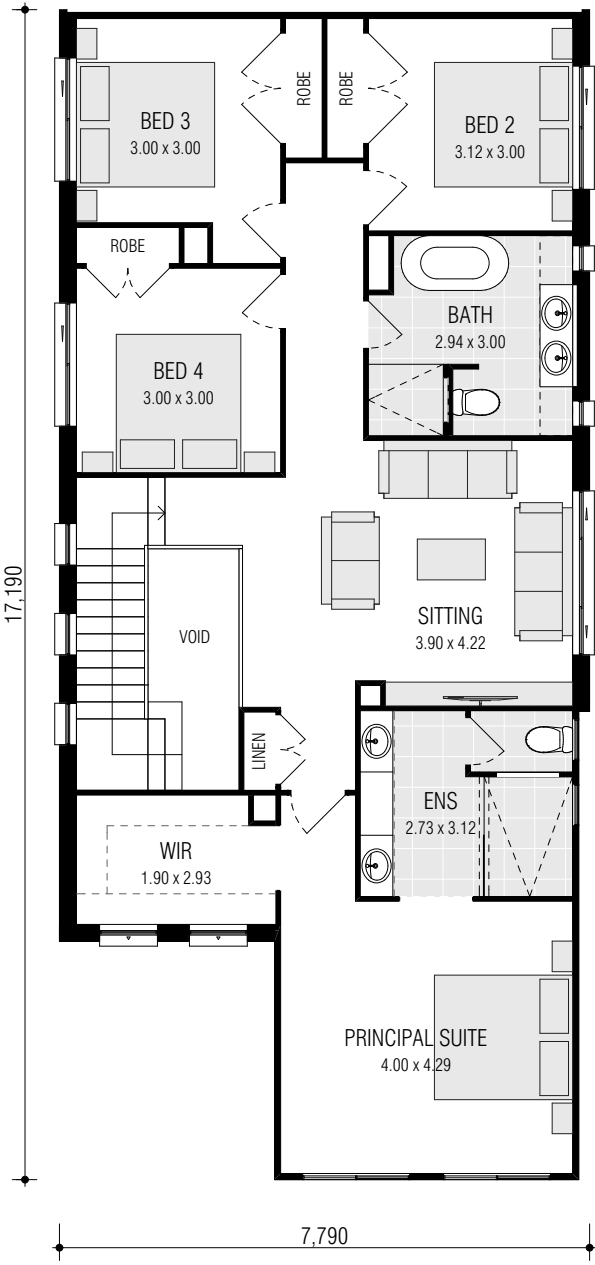


FIRST FLOOR

MONTARA 30.6

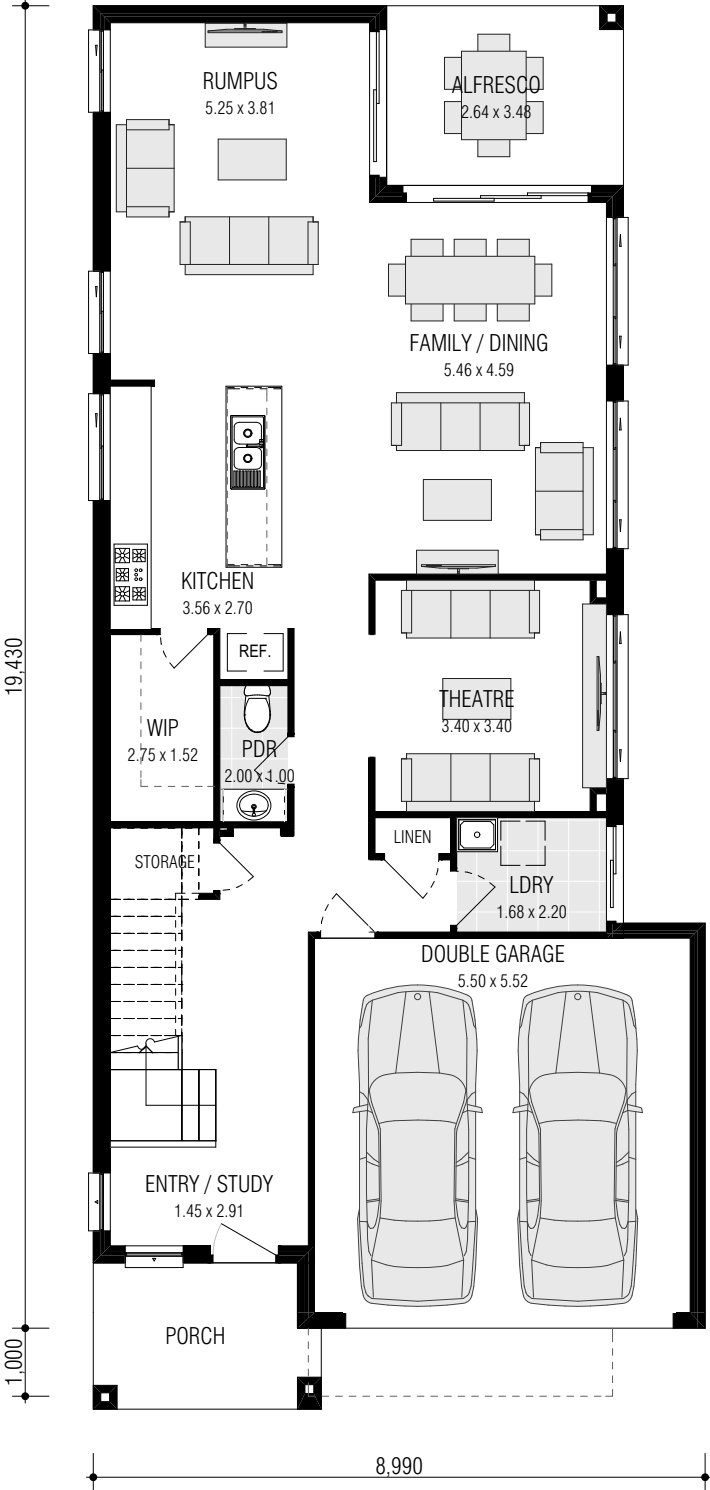


GROUND FLOOR

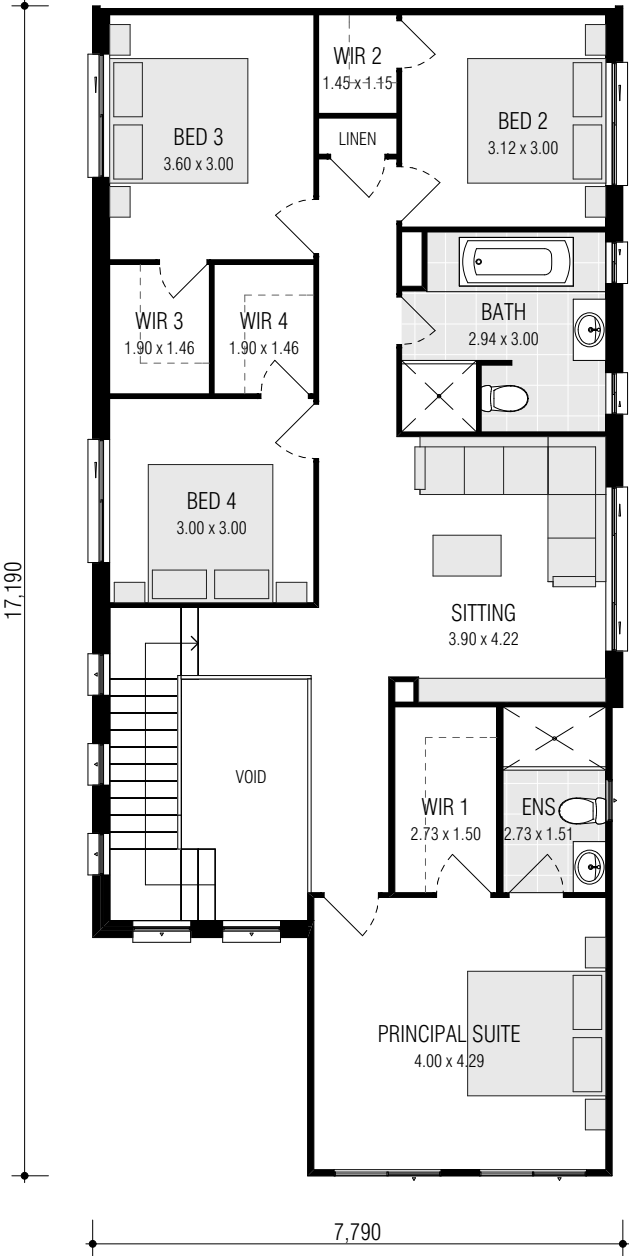


FIRST FLOOR

MONTARA 30.6 MKII



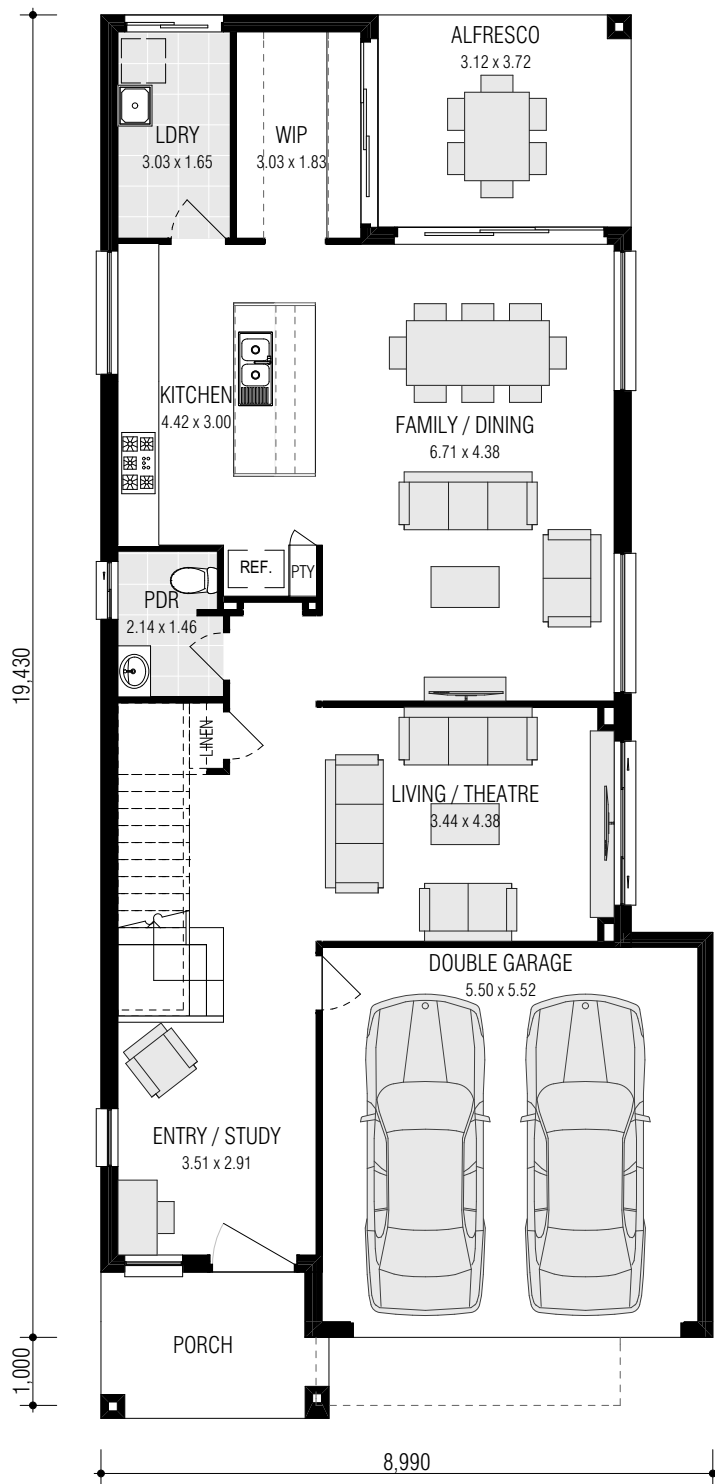
GROUND FLOOR



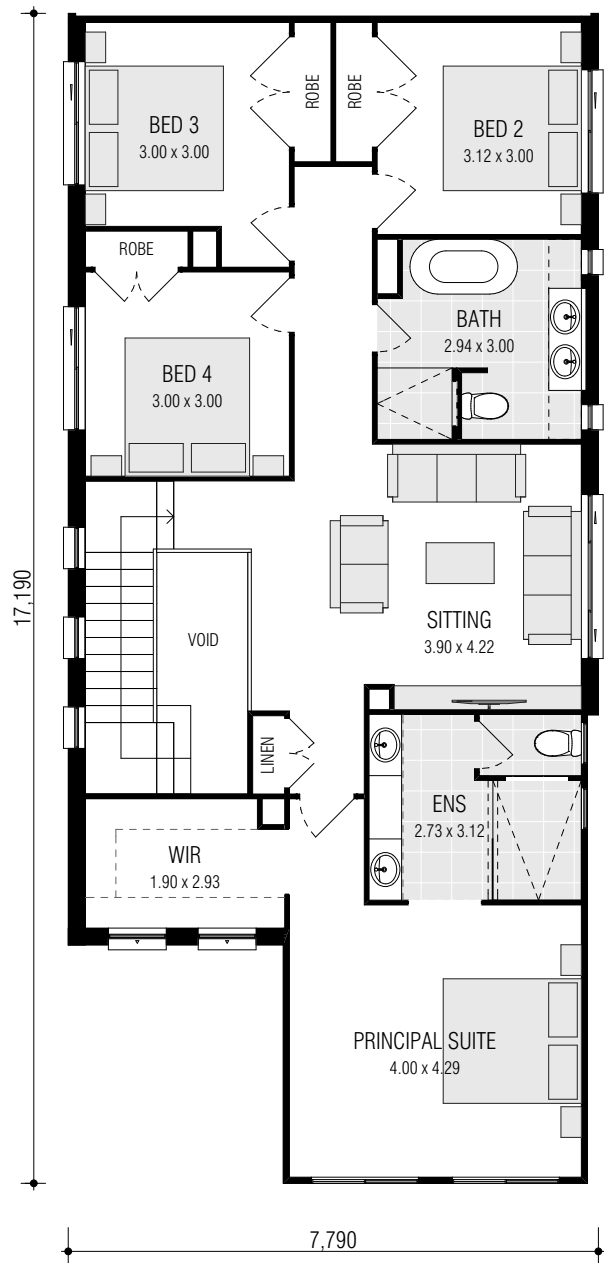
FIRST FLOOR

MONTARA 30.6 DISTINCT

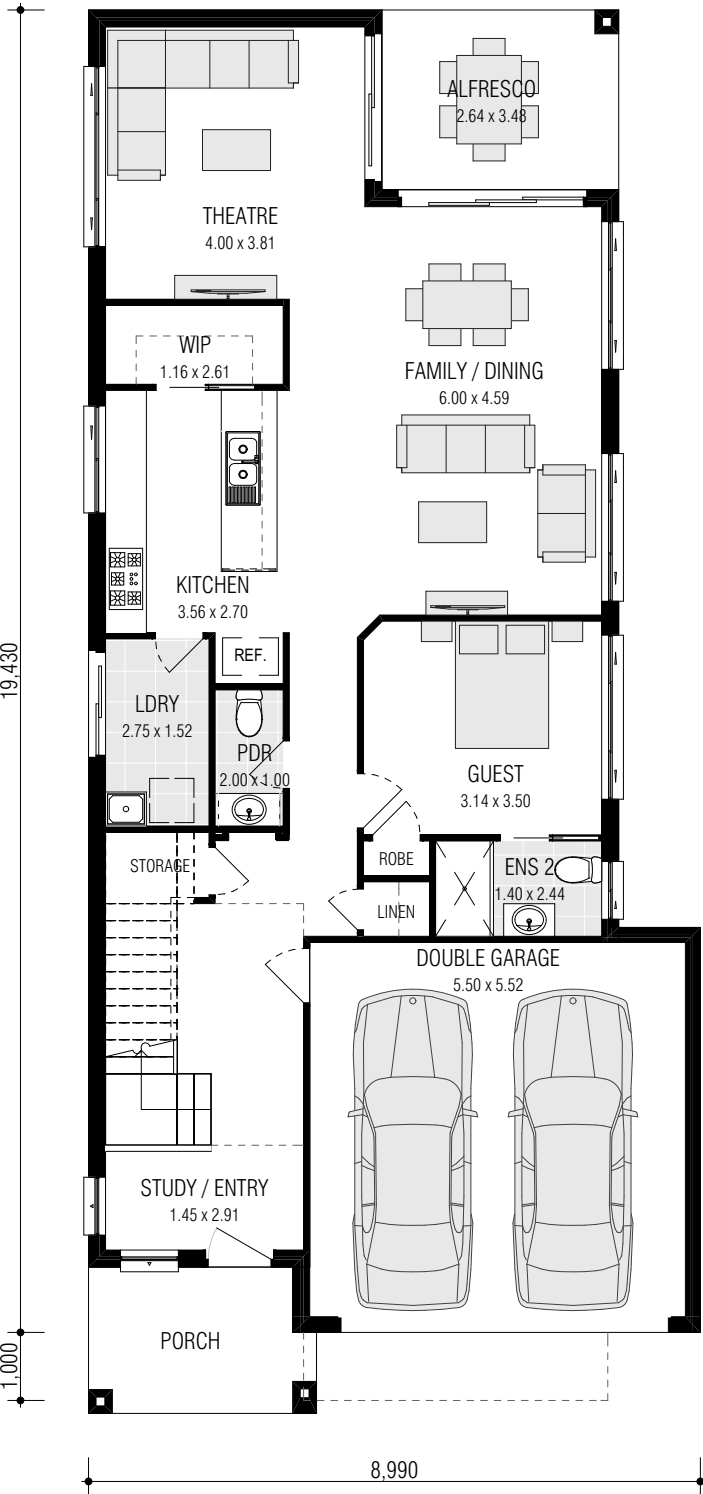
(ON DISPLAY AT HOMEWORLD MARSDEN PARK)



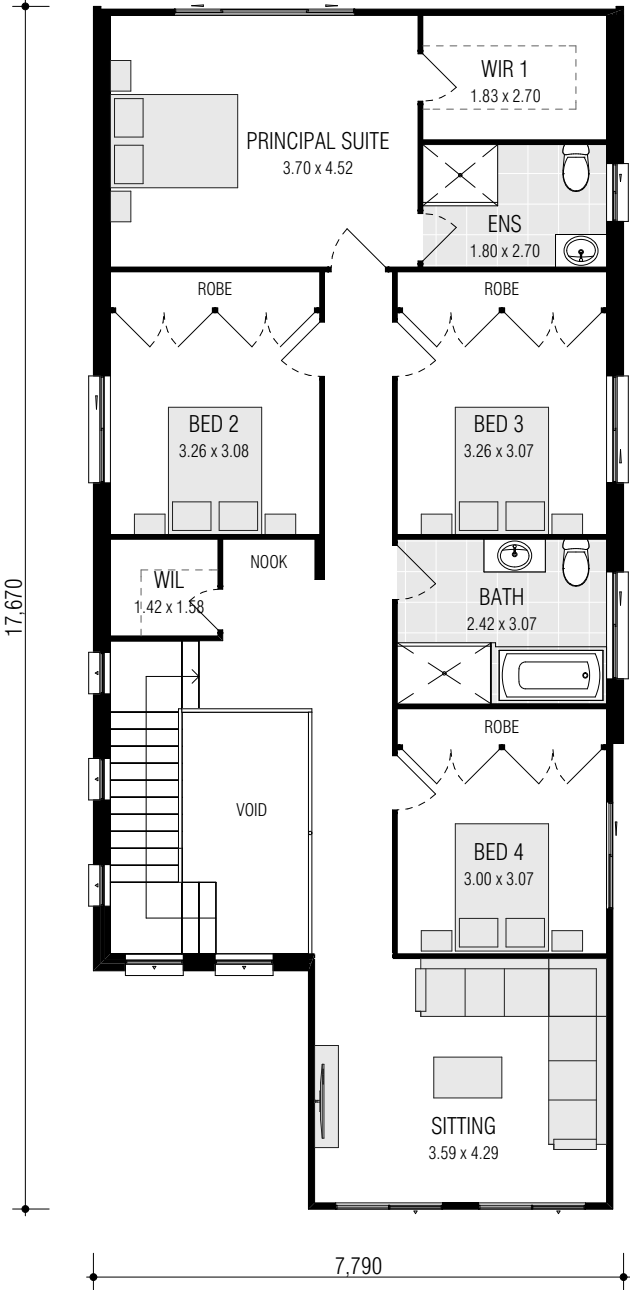
GROUND FLOOR



FIRST FLOOR

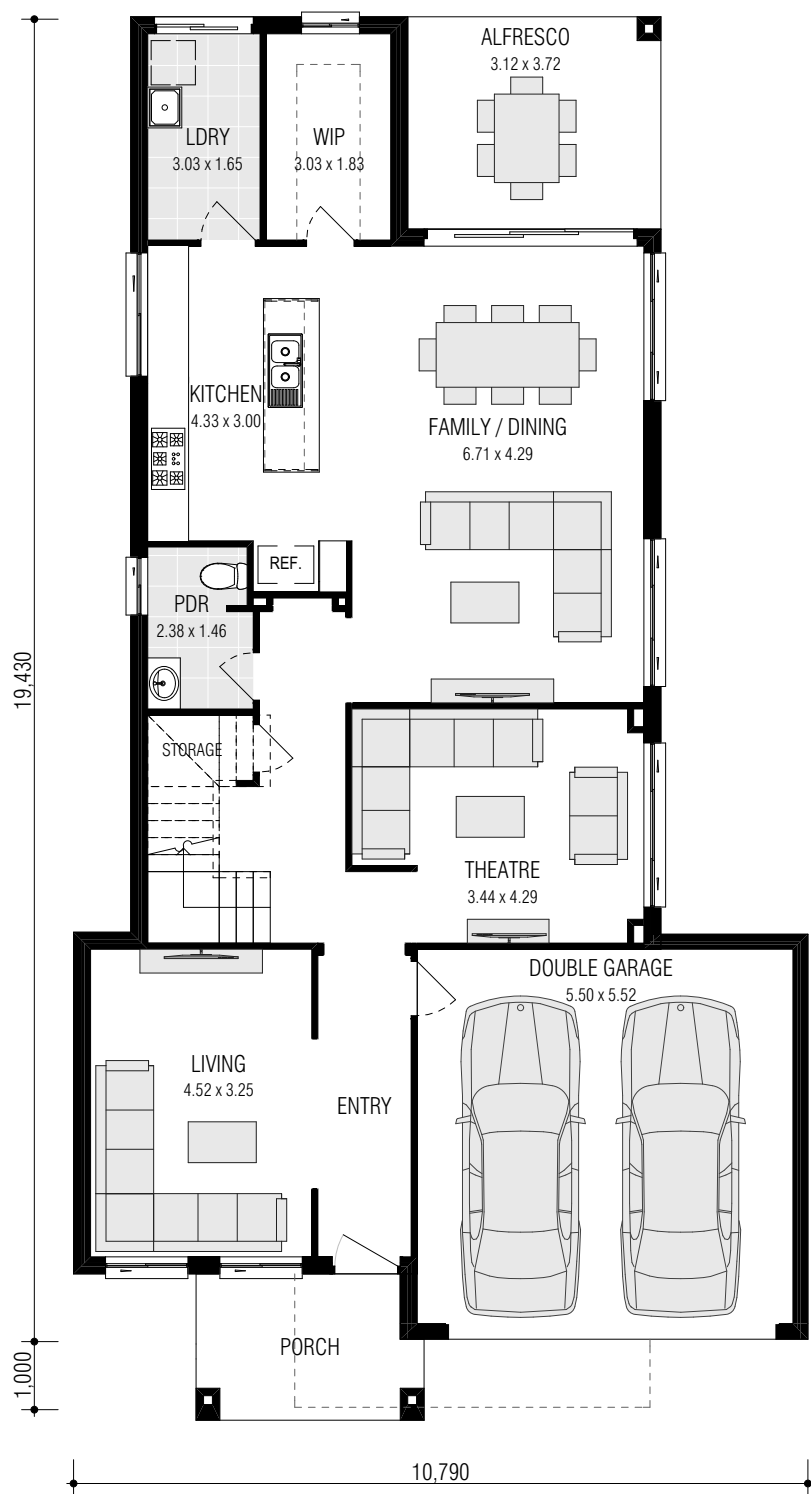


GROUND FLOOR

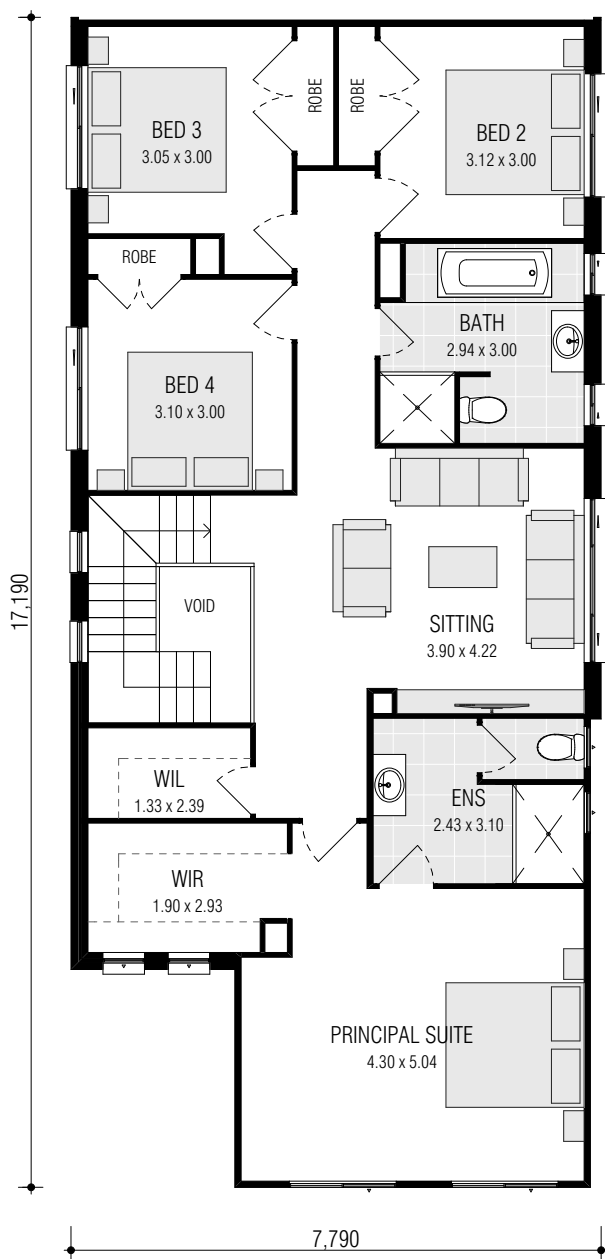


FIRST FLOOR

MONTARA 31.9



GROUND FLOOR



FIRST FLOOR

DISPLAY CENTRE LOCATIONS

1. LEPPINGTON

HOMEWORLD LEPPINGTON

58 Arkenstone Way Leppington NSW 2179

PH: 9606 4175 E: emeraldhills@firststyle.com.au

ON DISPLAY: Riverside & Aston

2. ORAN PARK

ORAN PARK TOWN

6 Webber Loop Oran Park NSW 2570

PH: 9043 5890 E: oranpark@firststyle.com.au

ON DISPLAY: Fitzroy, Montebello,
Burnley Duet & Silkwood

3. MARSDEN PARK

HOMEWORLD MARSDEN PARK

27 Ellison Street Marsden Park NSW 2765

PH: 8630 0429 E: marsdenpark@firststyle.com.au

ON DISPLAY: Norwood & Montara

4. BOX HILL

HOMEWORLD BOX HILL

14 Noah Street, Box Hill NSW 2765

PH: 8630 2020 E: boxhill@firststyle.com.au

ON DISPLAY: Grantham, Avoca & Clovelly

5. LEPPINGTON

LEPPINGTON LIVING

37 Moon Street Leppington NSW 2179

PH: 9608 7777 E: leppington@firststyle.com.au

ON DISPLAY: Paddington & Belrose

1300 FIRSTSTYLE
3 4 7 7 8 9 5 3
firststyle.com.au

DISCLAIMER: Photographs & Graphic impressions are representative only to finishes available and may not reflect the finish (Display Homes may vary based on design) to the standard design and may also depict fixtures, finishes & features not supplied by Firststyle Homes such as, but not limited to, landscaping & outdoor features, furnishing, decorative items, window furnishing. Dimensions are approximate only and may vary according to façade. Firststyle Homes reserves the right to revise specifications, inclusions, materials and suppliers without notice. Firststyle Homes Pty Ltd ABN 59 087 773 779 B.L.113412C