

NEVADA SERIES  
ON DISPLAY AT SPRING FARM



*live your life in style*

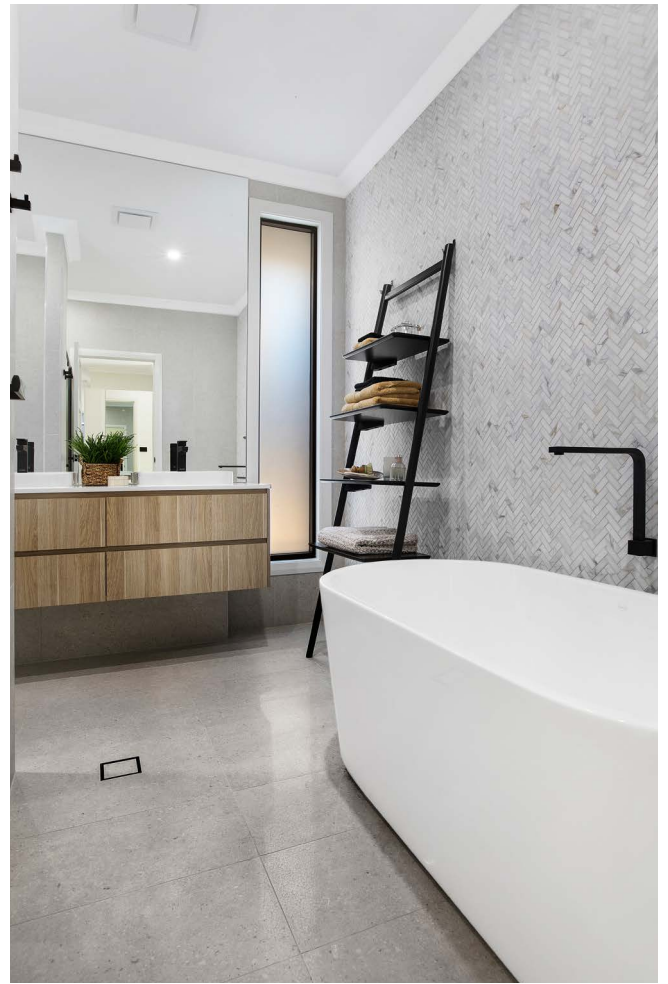
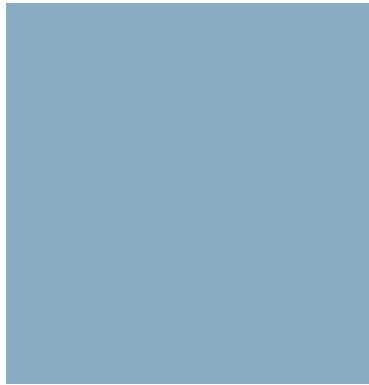
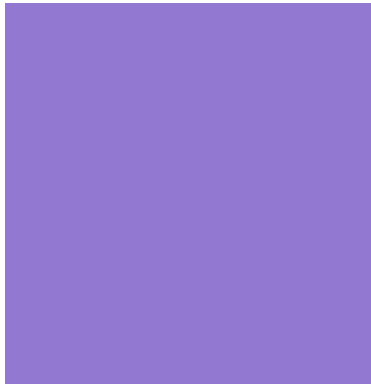
FLINDERS FACADE



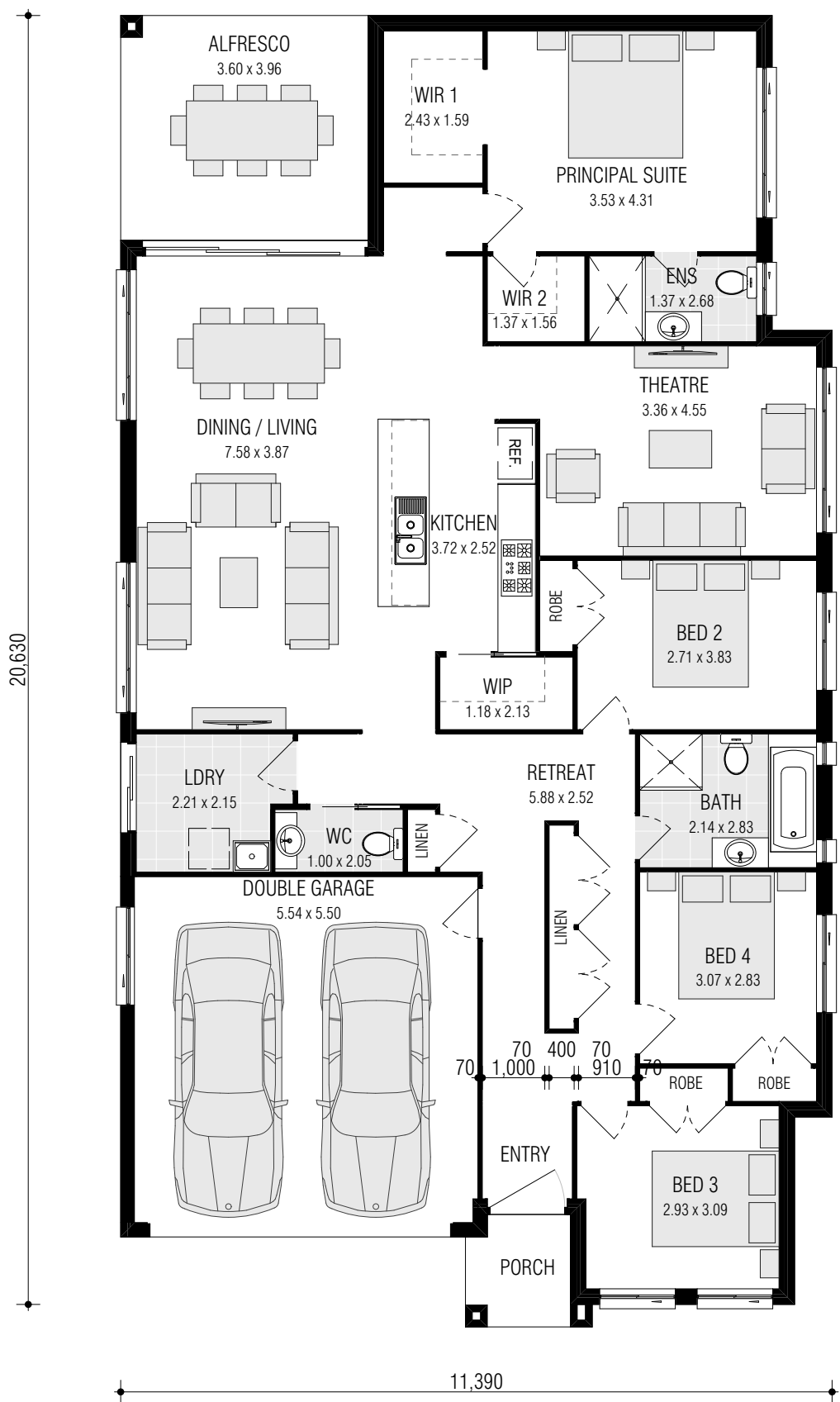
*style*



THE **NEVADA** FEATURES SPACIOUS  
FAMILY-FRIENDLY LIVING ZONES  
WHERE YOU CAN RETREAT AND RELAX  
PLUS AN IMPRESSIVE OUTDOOR  
ROOM THAT MAKES IT THE PERFECT  
HOME DESIGN TO ACCOMMODATE  
THE GROWING FAMILY.



NEVADA 24.0



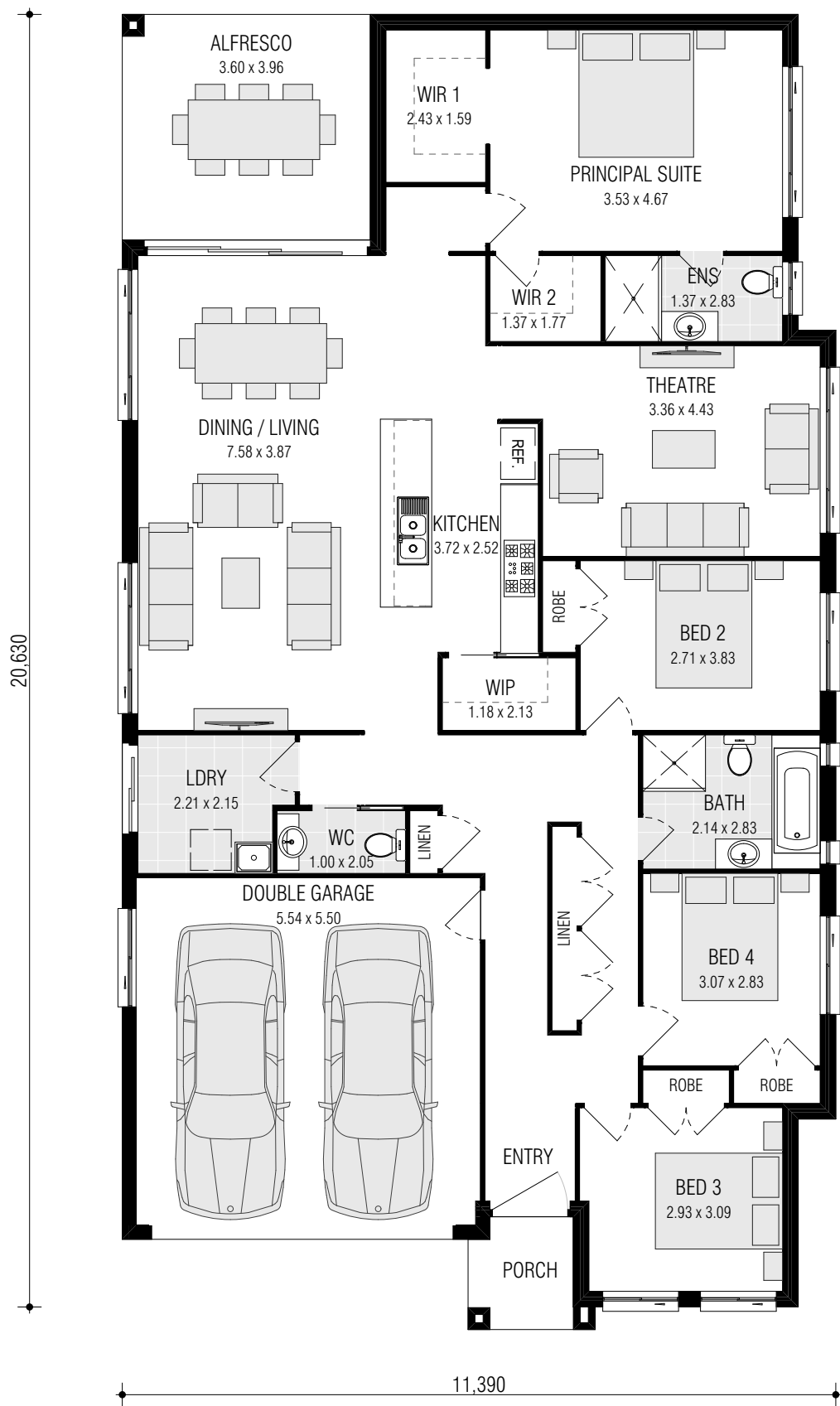
4 2 2 2

firststyle.com.au

■ FRONTAGE REQUIRED (MINIMUM): 13.37m ■ HOUSE SIZE: 223.11m<sup>2</sup> ■ SQUARES: 24.0 Sq ■ INCLUDED: ALFRESCO DINING

DISCLAIMER: Photographs & Graphic impressions are representative only to finishes available and may not reflect the finish to the standard design and may also depict fixtures, finishes & features not supplied by Firststyle Homes such as, but not limited to, landscaping & outdoor features, furnishing, decorative items, window furnishing. Dimensions are approximate only and may vary according to façade. Firststyle Homes reserves the right to revise specifications, inclusions, materials and suppliers without notice. Firststyle Homes Pty Ltd ABN 59 087 773 779 B.L.113412C FS0317

NEVADA 24.2

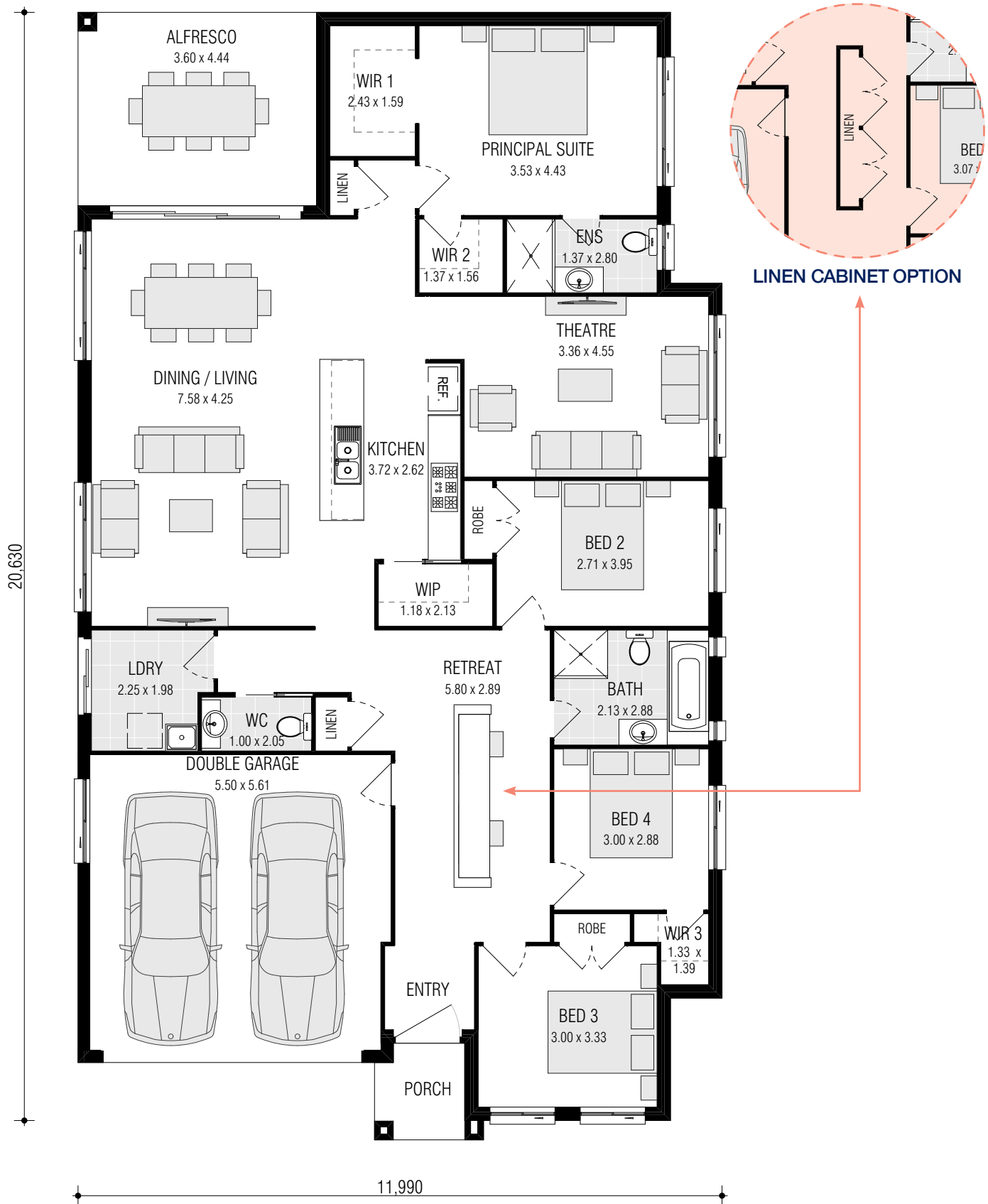


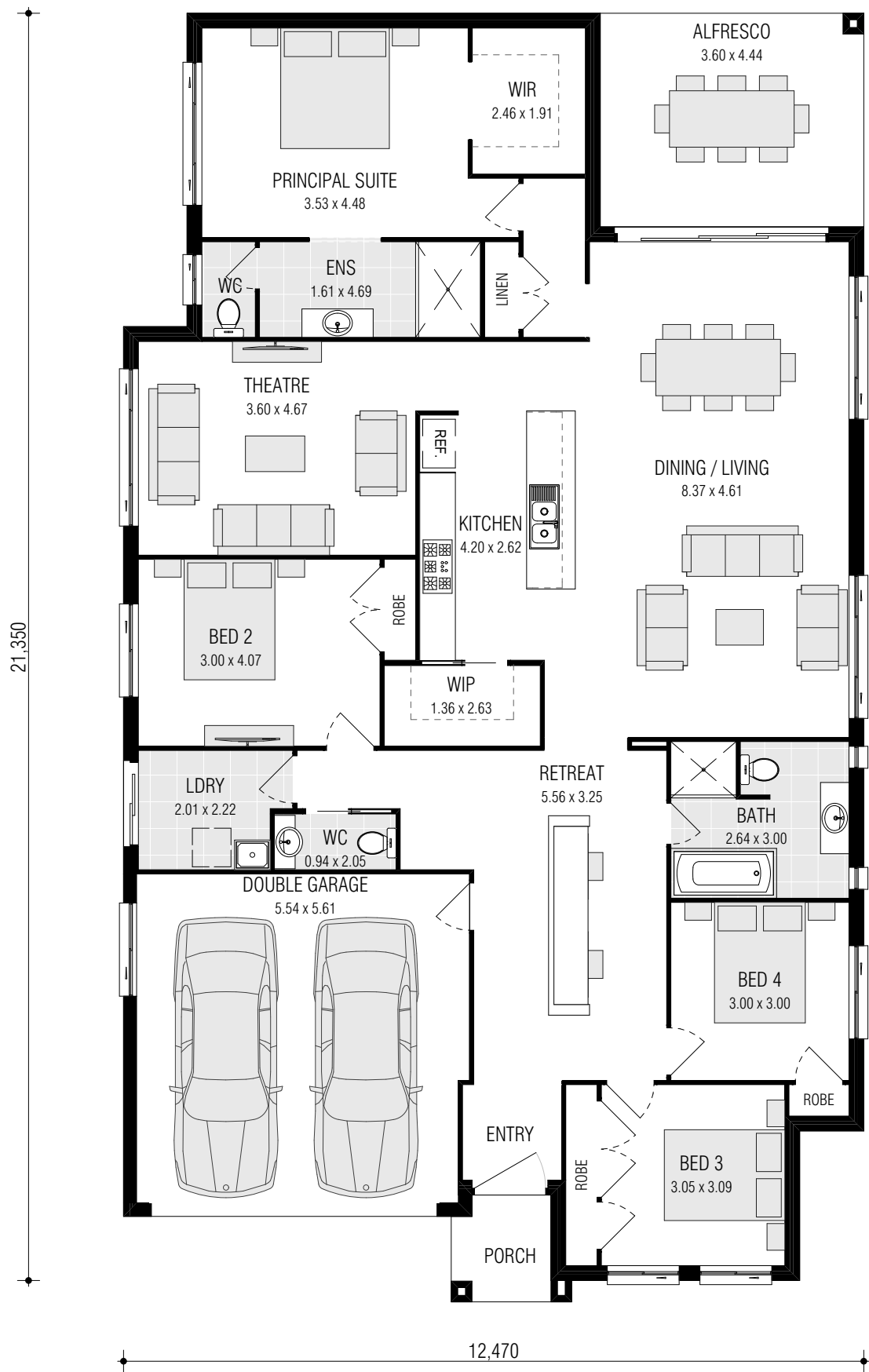
4 2 2 2

firststyle.com.au

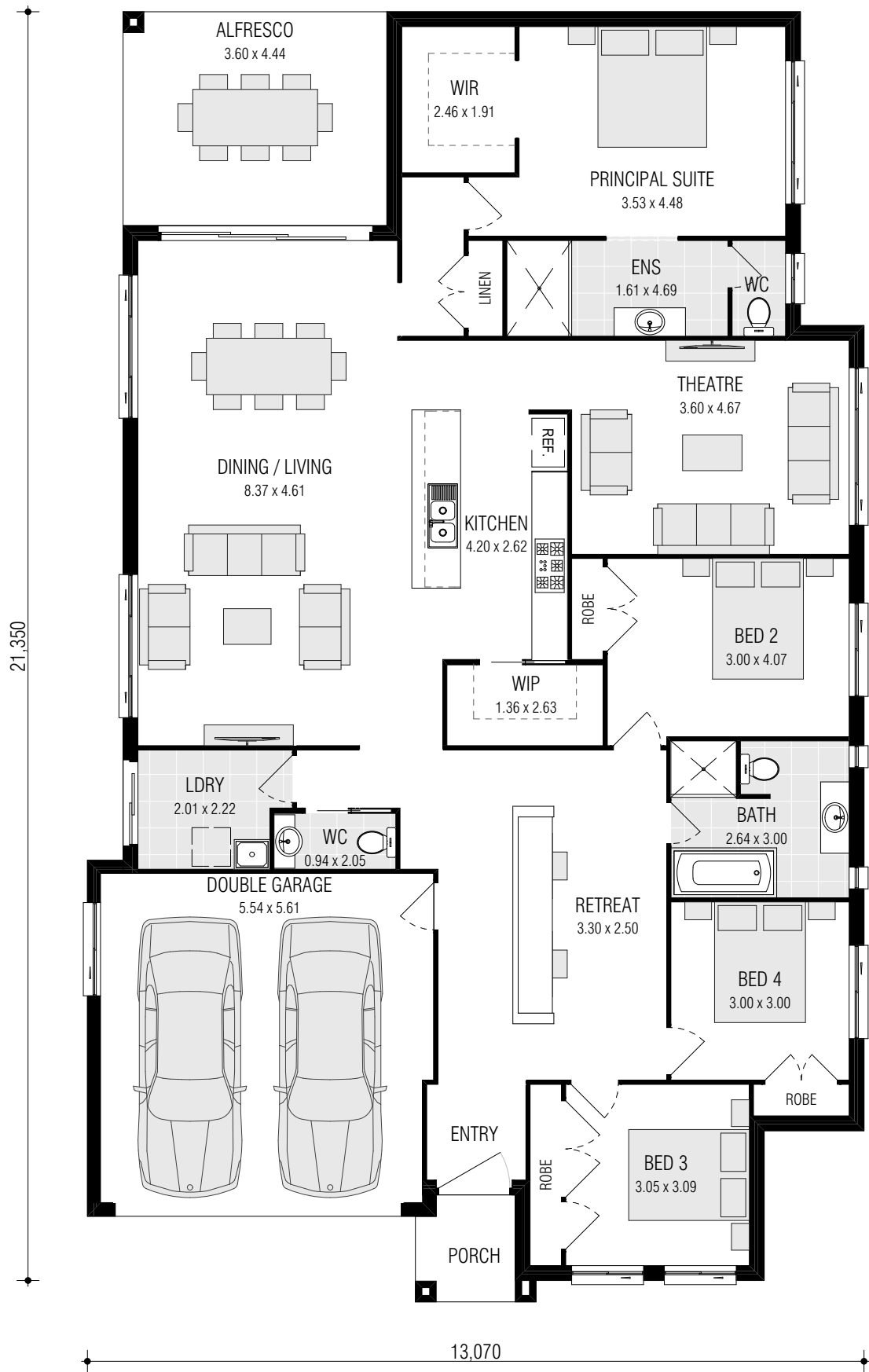
FRONTAGE REQUIRED (MINIMUM): 13.37m ■ HOUSE SIZE: 224.92m<sup>2</sup> ■ SQUARES: 24.2 Sq ■ INCLUDED: ALFRESCO DINING

DISCLAIMER: Photographs & Graphic impressions are representative only to finishes available and may not reflect the finish to the standard design and may also depict fixtures, finishes & features not supplied by Firststyle Homes such as, but not limited to, landscaping & outdoor features, furnishing, decorative items, window furnishing. Dimensions are approximate only and may vary according to façade. Firststyle Homes reserves the right to revise specifications, inclusions, materials and suppliers without notice. Firststyle Homes Pty Ltd ABN 59 087 773 779 B.L. 113412C FS0317





# NEVADA 27.5



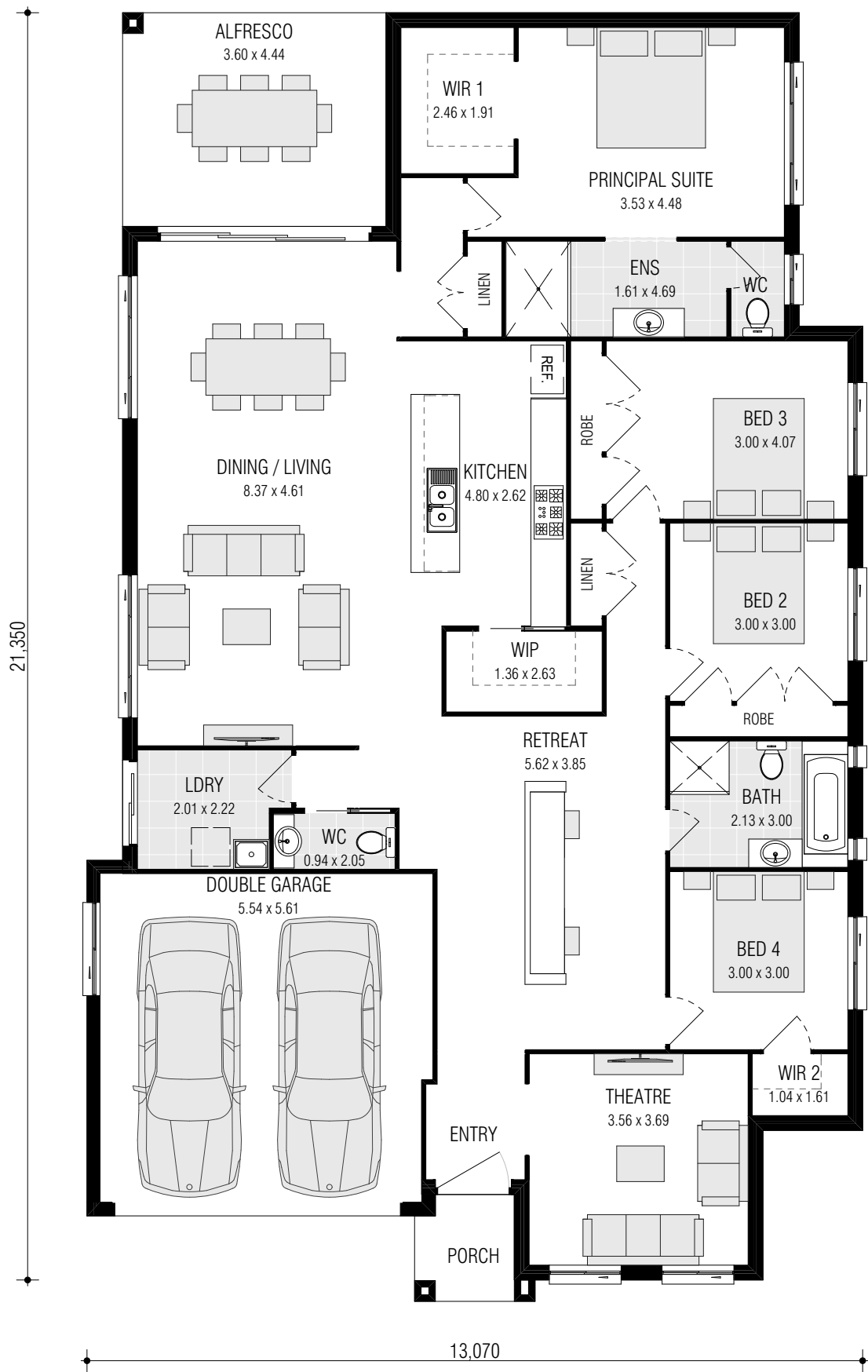
4 2 2 2

firststyle.com.au

■ FRONTAGE REQUIRED (MINIMUM): 14.93m ■ HOUSE SIZE: 255.41m<sup>2</sup> ■ SQUARES: 27.5 Sq ■ INCLUDED: ALFRESCO DINING

DISCLAIMER: Photographs & Graphic impressions are representative only to finishes available and may not reflect the finish to the standard design and may also depict fixtures, finishes & features not supplied by Firststyle Homes such as, but not limited to, landscaping & outdoor features, furnishing, decorative items, window furnishing. Dimensions are approximate only and may vary according to façade. Firststyle Homes reserves the right to revise specifications, inclusions, materials and suppliers without notice. Firststyle Homes Pty Ltd ABN 59 087 773 779 B.L.113412C FS0317

NEVADA 27.5 MKII



4 2 2 2

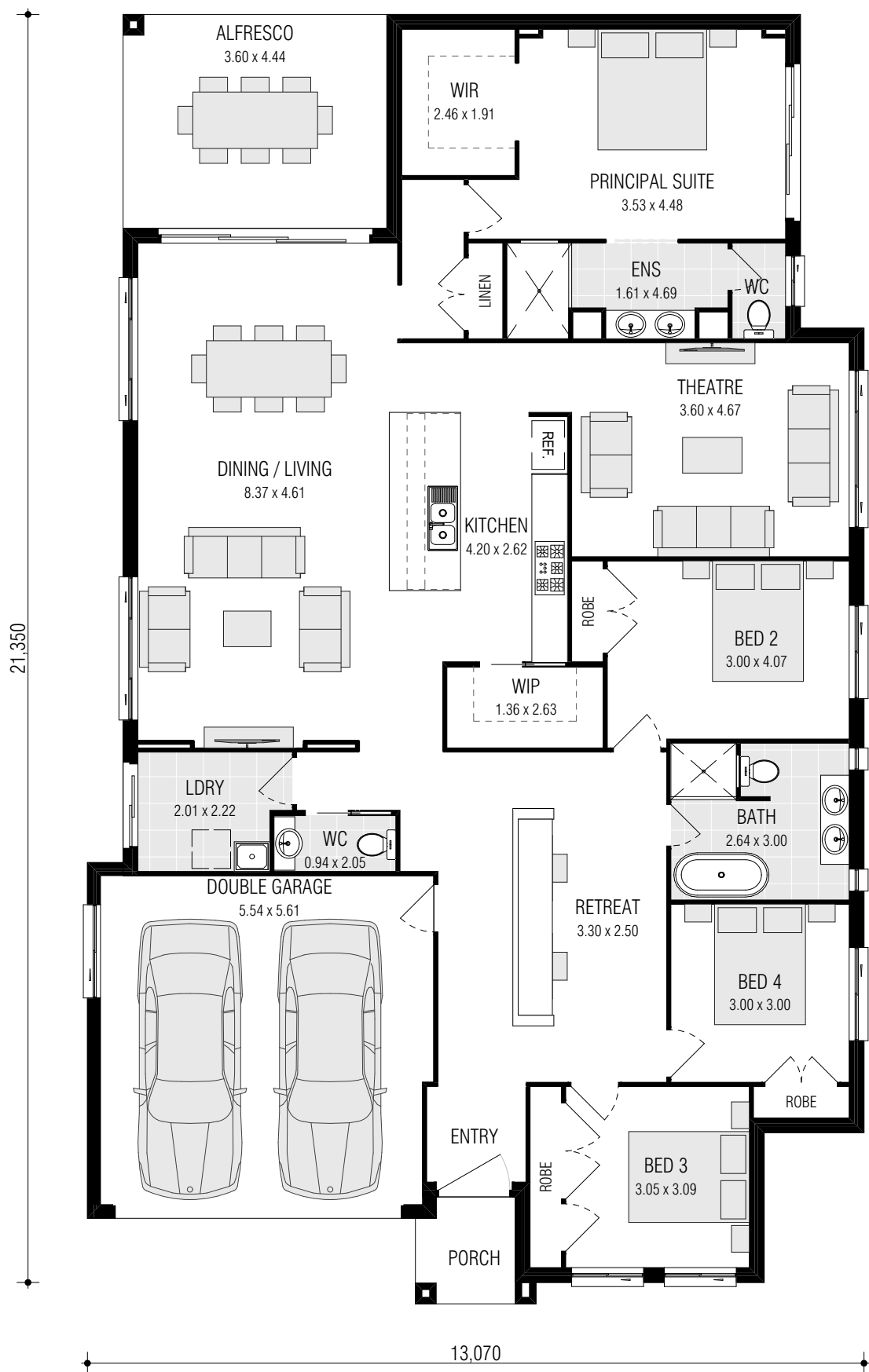
firststyle.com.au

FRONTAGE REQUIRED (MINIMUM): 14.93m ■ HOUSE SIZE: 255.41m<sup>2</sup> ■ SQUARES: 27.5 Sq ■ INCLUDED: ALFRESCO DINING

DISCLAIMER: Photographs & Graphic impressions are representative only to finishes available and may not reflect the finish to the standard design and may also depict fixtures, finishes & features not supplied by Firststyle Homes such as, but not limited to, landscaping & outdoor features, furnishing, decorative items, window furnishing. Dimensions are approximate only and may vary according to façade. Firststyle Homes reserves the right to revise specifications, inclusions, materials and suppliers without notice. Firststyle Homes Pty Ltd ABN 59 087 773 779 B.L. 113412C FS0317

NEVADA 27.5 DISTINCT

ON DISPLAY AT SPRING FARM



4 2 2 2

firststyle.com.au

■ FRONTAGE REQUIRED (MINIMUM): 14.93m ■ HOUSE SIZE: 255.41m<sup>2</sup> ■ SQUARES: 27.5 Sq ■ INCLUDED: ALFRESCO DINING

DISCLAIMER: Photographs & Graphic impressions are representative only to finishes available and may not reflect the finish to the standard design and may also depict fixtures, finishes & features not supplied by Firststyle Homes such as, but not limited to, landscaping & outdoor features, furnishing, decorative items, window furnishing. Dimensions are approximate only and may vary according to façade. Firststyle Homes reserves the right to revise specifications, inclusions, materials and suppliers without notice. Firststyle Homes Pty Ltd ABN 59 087 773 779 B.L. 113412C FS0317

## NEVADA SERIES FACADE OPTIONS

---



ALTA



ASPEN



NUVO



BROOKLYN



CAPRI



CHELSEA (ON DISPLAY AT ORAN PARK)



FLINDERS (ON DISPLAY AT SPRING FARM)



GLEBE (ON DISPLAY AT EDMONDSON PARK)



HUNTER (ON DISPLAY AT LEPPINGTON)



MAQUARIE (ON DISPLAY AT EDMONDSON PARK)



# DISPLAY CENTRE LOCATIONS

## 1. EDMONDSON PARK

### VILLAGE SQUARE DISPLAY VILLAGE

9 Clement Road Edmondson Park NSW 2174

PH: 9608 9777 E: edpark@firststyle.com.au

ON DISPLAY: Waterhouse, Chatswood,  
Keswick & Ashmore

## 2. LEPPINGTON

### HOMEWORLD LEPPINGTON

58 Arkenstone Way Leppington NSW 2179

PH: 9606 4175 E: emeraldhills@firststyle.com.au

ON DISPLAY: Riverside & Aston

## 3. ORAN PARK

### ORAN PARK TOWN

6 Webber Loop Oran Park NSW 2570

PH: 9043 5890 E: oranpark@firststyle.com.au

ON DISPLAY: Fitzroy, Montebello,  
Burnley Duet & Silkwood

## 4. SPRING FARM

### EVERGREEN SPRING FARM

120 Springs Road Spring Farm NSW 2570

PH: 9138 7753 E: springfarm@firststyle.com.au

ON DISPLAY: Keswick & Nevada

## 5. MARSDEN PARK

### HOMEWORLD MARSDEN PARK

27 Ellison Street Marsden Park NSW 2765

PH: 8630 0429 E: marsdenpark@firststyle.com.au

ON DISPLAY: Norwood & Montara

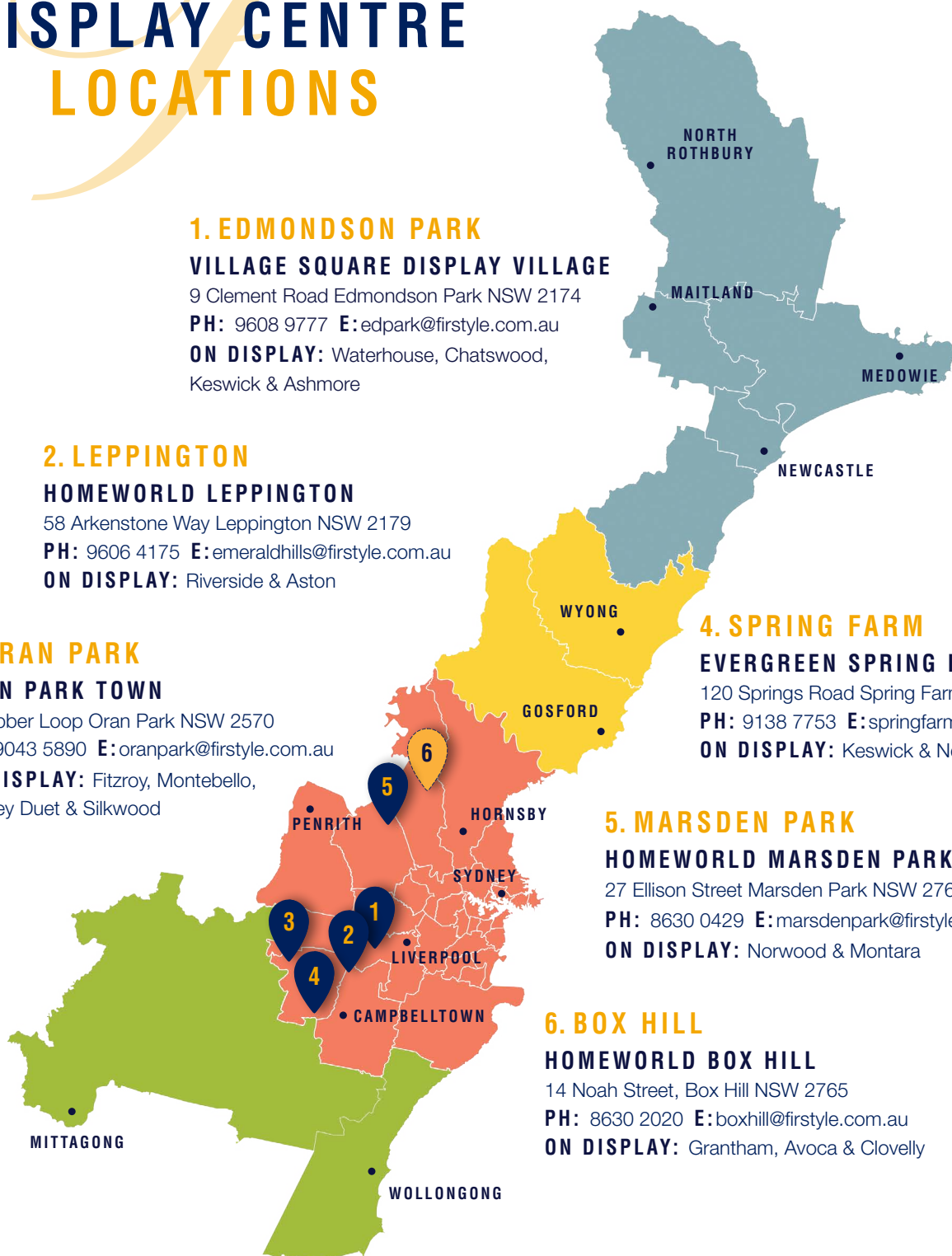
## 6. BOX HILL

### HOMEWORLD BOX HILL

14 Noah Street, Box Hill NSW 2765

PH: 8630 2020 E: boxhill@firststyle.com.au

ON DISPLAY: Grantham, Avoca & Clovelly



**1300 FIRSTSTYLE**  
3 4 7 7 8 9 5 3  
**firststyle.com.au**

DISCLAIMER: Photographs & Graphic impressions are representative only to finishes available and may not reflect the finish (Display Homes may vary based on design) to the standard design and may also depict fixtures, finishes & features not supplied by Firststyle Homes such as, but not limited to, landscaping & outdoor features, furnishing, decorative items, window furnishing. Dimensions are approximate only and may vary according to façade. Firststyle Homes reserves the right to revise specifications, inclusions, materials and suppliers without notice. Firststyle Homes Pty Ltd ABN 59 087 773 779 B.L.113412C