



ARTIST IMPRESSION ONLY. CAPRI FAÇADE AS ILLUSTRATED.

ECCO 12.7 (0-LOT) MOD

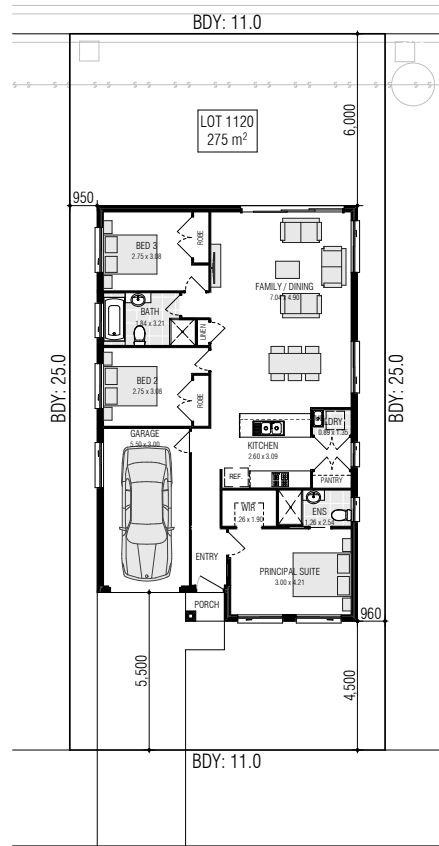
LAND SIZE: 275m² | SQUARES: 13.9 Sq

\$489,900 CAPRI
FAÇADE
INCLUDED

LOT 1120 ROAD 30 - WILTON GREENS

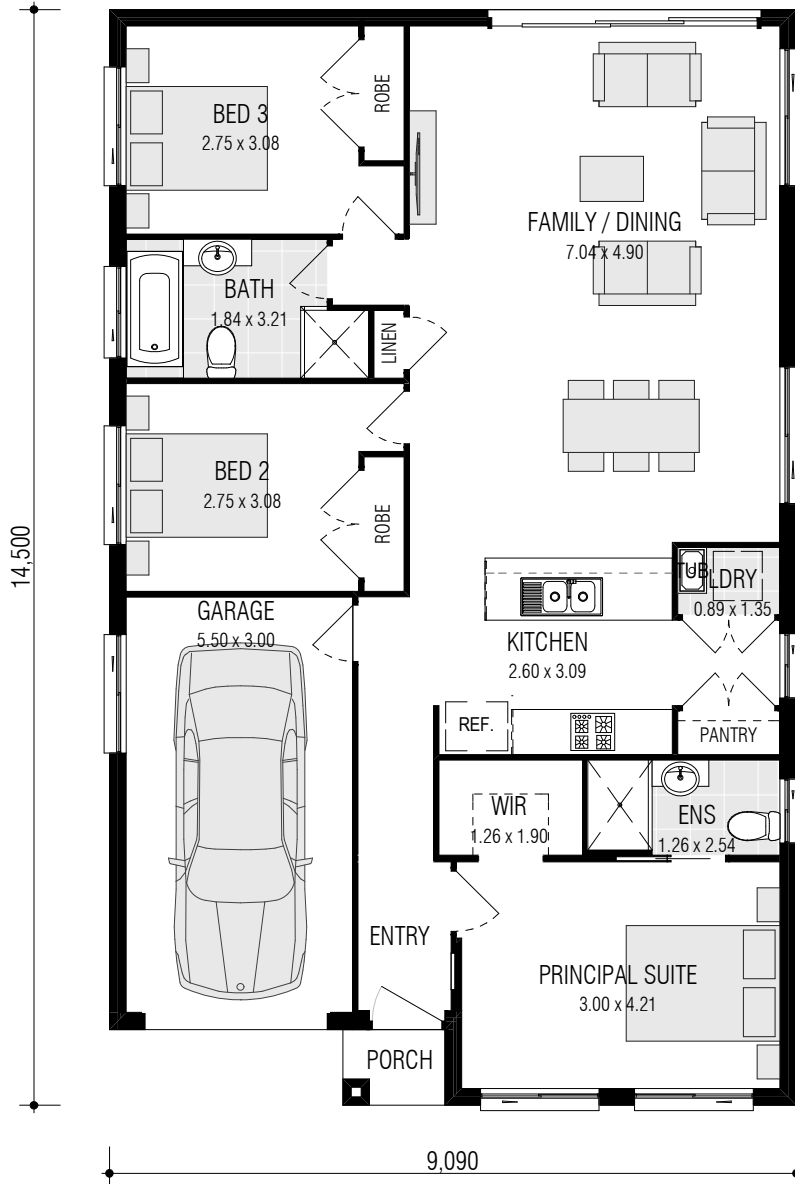
INCLUSIONS:

- ✓ 3 Bedrooms with Single Locked-up Garage
- ✓ Ceramic Tiling to Porch, Entry, Kitchen & Family/Dining
- ✓ Carpet to Bedrooms
- ✓ Natural gas package incl. Instantaneous HWS
- ✓ Fixed Site Costs & Basix Requirements
- ✓ Insulation to Ceiling & Walls (Except Garage)
- ✓ 2.59m Ceilings
- ✓ H2 Termite Treated Frame
- ✓ Coloured concrete Driveway & Pathway to Porch
- ✓ Remote Control Panel Lift Garage Door
- ✓ Stone benchtop to Kitchen & 600mm Westinghouse Appliances
- ✓ Alarm System
- ✓ 10 LED Downlights
- ✓ Video/Audio Intercom System
- ✓ Fully Ducted Day/Night Air Conditioning
- ✓ LIVING INCLUSIONS*



ROAD 30





ECCO 12.7 (0-LOT) MOD

firststyle.com.au

• FRONTAGE REQUIRED (MINIMUM): 9.38m • HOUSE SIZE: 128.72m² | SQUARES: 13.9Sq •

DISCLAIMER: All plans, images and areas are indicative only. The finishes to the nominated design are to be used as a guide only. Purchases are advised to refer to the Land Contract and or Builders Tender and Contract for precise dimensions, specifications and inclusions. Firststyle Homes reserves the right to change specifications, materials and suppliers without notice. B.L 113412C